

Product datasheet for **TA359299**

eEF1A2 binding protein (IGFN1) Rabbit Polyclonal Antibody

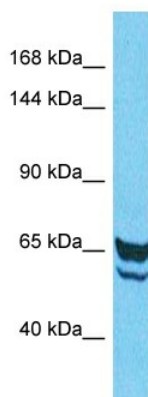
Product data:

Product Type:	Primary Antibodies
Applications:	WB
Reactivity:	Human
Host:	Rabbit
Clonality:	Polyclonal
Immunogen:	The immunogen is a synthetic peptide directed towards the middle region of Human IGFN1
Specificity:	Expected reactivity: Human
Formulation:	Liquid. Purified antibody supplied in 1x PBS buffer with 0.09% (w/v) sodium azide and 2% sucrose.
Concentration:	lot specific
Purification:	Affinity Purified
Conjugation:	Unconjugated
Storage:	For short term use, store at 2-8°C up to 1 week. For long term storage, store at -20°C in small aliquots to prevent freeze-thaw cycles.
Stability:	Shelf life: one year from despatch.
Predicted Protein Size:	62kDa
Gene Name:	immunoglobulin-like and fibronectin type III domain containing 1
Database Link:	Entrez Gene 91156 Human Q86VF2-4
Background:	The function of this protein remains unknown.
Synonyms:	DKFZp434B1231; EEF1A2BP1; KYIP1



[View online »](#)

Product images:



Host: Rabbit
Target Name: IGFN1
Sample Tissue: HepG2 Cell Lysate
Antibody Dilution: 1.0 μ g/ml

Host: Rabbit
Target Name: IGFN1
Sample Type: HepG2 Whole Cell lysates
Antibody Dilution: 1.0ug/ml