

Product datasheet for **TA359295**

GLYR1 Rabbit Polyclonal Antibody

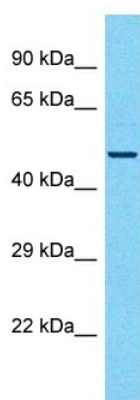
Product data:

Product Type:	Primary Antibodies
Applications:	WB
Reactivity:	Human
Host:	Rabbit
Clonality:	Polyclonal
Immunogen:	The immunogen is a synthetic peptide directed towards the N-terminal region of Human GLYR1
Specificity:	Expected reactivity: Human
Formulation:	Liquid. Purified antibody supplied in 1x PBS buffer with 0.09% (w/v) sodium azide and 2% sucrose. <i>Note that this product is shipped as lyophilized powder to China customers.</i>
Concentration:	lot specific
Purification:	Affinity Purified
Conjugation:	Unconjugated
Storage:	For short term use, store at 2-8°C up to 1 week. For long term storage, store at -20°C in small aliquots to prevent freeze-thaw cycles.
Stability:	Shelf life: one year from despatch.
Predicted Protein Size:	53kDa
Gene Name:	glyoxylate reductase 1 homolog
Database Link:	Entrez Gene 84656 Human Q49A26-4
Background:	GLYR1 may have oxidoreductase activity. It regulates p38 MAP kinase activity by mediating stress activation of p38alpha/MAPK14 and specifically regulating MAPK14 signaling. It indirectly promotes phosphorylation of MAPK14 and activation of ATF2. The phosphorylation of MAPK14 requires upstream activity of MAP2K4 and MAP2K6. It is recruited on chromatin, recognizes and binds trimethylated 'Lys-36' of histone H3 (H3K36me3).
Synonyms:	2810419J22Rik; 3930401K13Rik; 3930401k13rik; AW545332; N-pac; Npac; RGD1309459



[View online »](#)

Product images:



Host: Rabbit
Target Name: GLYR1
Sample Tissue: HT1080 Cell Lysate
Antibody Dilution: 1.0µg/ml

Host: Rabbit
Target Name: GLYR1
Sample Type: HT1080 Whole Cell lysates
Antibody Dilution: 1.0ug/ml