

Product datasheet for **TA359290**

CSRP2BP (KAT14) Rabbit Polyclonal Antibody

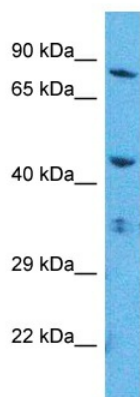
Product data:

Product Type:	Primary Antibodies
Applications:	WB
Reactivity:	Human
Host:	Rabbit
Clonality:	Polyclonal
Immunogen:	The immunogen for Anti-CSRP2BP antibody is: synthetic peptide directed towards the N-terminal region of Human CSR2B
Specificity:	Expected reactivity: Human
Formulation:	Liquid. Purified antibody supplied in 1x PBS buffer with 0.09% (w/v) sodium azide and 2% sucrose.
Concentration:	lot specific
Purification:	Affinity purified
Conjugation:	Unconjugated
Storage:	For short term use, store at 2-8°C up to 1 week. For long term storage, store at -20°C in small aliquots to prevent freeze-thaw cycles.
Stability:	Shelf life: one year from despatch.
Predicted Protein Size:	86 kDa
Gene Name:	lysine acetyltransferase 14
Database Link:	NP_065397.3 Entrez Gene 57325 Human Q9H8E8
Background:	CSRP2 is a protein containing two LIM domains, which are double zinc finger motifs found in proteins of diverse function. CSRP2 and some related proteins are thought to act as protein adapters, bridging two or more proteins to form a larger protein complex. The protein encoded by this gene binds to one of the LIM domains of CSRP2 and contains an acetyltransferase domain. Although the encoded protein has been detected in the cytoplasm, it is predominantly a nuclear protein. Alternatively spliced transcript variants have been described.



[View online »](#)

Product images:



Host: Rabbit
Target Name: CSR2B
Sample Tissue: HepG2 Cell Lysate
Antibody Dilution: 1.0 μ g/ml

WB Suggested Anti-CSR2B antibody Titration: 1
ug/mL
Sample Type: Human HepG2 Whole Cell