

## Product datasheet for **TA359288**

### CAB39L Rabbit Polyclonal Antibody

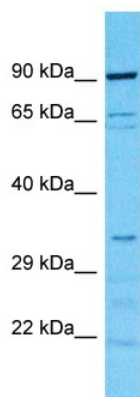
#### Product data:

Product Type:	Primary Antibodies
Applications:	WB
Reactivity:	Human
Host:	Rabbit
Clonality:	Polyclonal
Immunogen:	The immunogen is a synthetic peptide directed towards the C-terminal region of human CAB39L
Specificity:	<b>Expected reactivity:</b> Human
Formulation:	Liquid. Purified antibody supplied in 1x PBS buffer with 0.09% (w/v) sodium azide and 2% sucrose. <i>Note that this product is shipped as lyophilized powder to China customers.</i>
Concentration:	lot specific
Purification:	Affinity Purified
Conjugation:	Unconjugated
Storage:	For short term use, store at 2-8°C up to 1 week. For long term storage, store at -20°C in small aliquots to prevent freeze-thaw cycles.
Stability:	Shelf life: one year from despatch.
Predicted Protein Size:	30kDa
Gene Name:	calcium binding protein 39 like
Database Link:	<a href="#">NP_001073138.1</a> <a href="#">Entrez Gene 81617 Human</a> <a href="#">Q9H9S4</a>
Synonyms:	bA103J18.3; FLJ12577; MO2L; MO25-BETA; OTTHUMP00000018412; OTTHUMP00000205794; RP11-103J18.3
Protein Pathways:	mTOR signaling pathway



[View online »](#)

## Product images:



Host: Rabbit  
Target Name: CAB39L  
Sample Tissue: Hela Cell Lysate  
Antibody Dilution: 1.0 $\mu$ g/ml

Host: Rabbit  
Target Name: CAB39L  
Sample Type: Hela Whole cell lysates  
Antibody Dilution: 1.0ug/ml