

## Product datasheet for **TA359284**

### ARFIP1 Rabbit Polyclonal Antibody

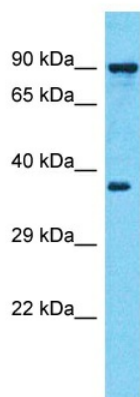
#### Product data:

Product Type:	Primary Antibodies
Applications:	WB
Reactivity:	Human
Host:	Rabbit
Clonality:	Polyclonal
Immunogen:	The immunogen is a synthetic peptide directed towards the N-terminal region of Human ARFIP1
Specificity:	<b>Expected reactivity:</b> Cow, Dog, Horse, Human, Rabbit, Rat <b>Homology:</b> Cow: 86%; Dog: 93%; Horse: 93%; Human: 100%; Rabbit: 86%; Rat: 79%
Formulation:	Liquid. Purified antibody supplied in 1x PBS buffer with 0.09% (w/v) sodium azide and 2% sucrose. <i>Note that this product is shipped as lyophilized powder to China customers.</i>
Concentration:	lot specific
Purification:	Affinity Purified
Conjugation:	Unconjugated
Storage:	For short term use, store at 2-8°C up to 1 week. For long term storage, store at -20°C in small aliquots to prevent freeze-thaw cycles.
Stability:	Shelf life: one year from despatch.
Predicted Protein Size:	37kDa
Gene Name:	ADP ribosylation factor interacting protein 1
Database Link:	<a href="#">Entrez Gene 27236 Human P53367-2</a>
Background:	ARFIP1 is a putative target protein of ADP-ribosylation factor.
Synonyms:	HSU52521; MGC117369



[View online »](#)

## Product images:



Host: Rabbit  
Target Name: ARFIP1  
Sample Tissue: MDA-MB-435s Cell Lysate  
Antibody Dilution: 1.0 $\mu$ g/ml

Host: Rabbit  
Target Name: ARFIP1  
Sample Type: MDA-MB-435s Whole Cell lysates  
Antibody Dilution: 1.0 $\mu$ g/ml