

Product datasheet for **TA359281**

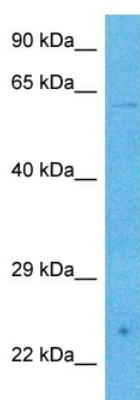
PHACTR3 Rabbit Polyclonal Antibody

Product data:

Product Type:	Primary Antibodies
Applications:	WB
Reactivity:	Human
Host:	Rabbit
Clonality:	Polyclonal
Immunogen:	The immunogen for Anti-PHACTR3 antibody is: synthetic peptide directed towards the middle region of Human PHAR3
Specificity:	Expected reactivity: Human
Formulation:	Liquid. Purified antibody supplied in 1x PBS buffer with 0.09% (w/v) sodium azide and 2% sucrose.
Concentration:	lot specific
Purification:	Affinity purified
Conjugation:	Unconjugated
Storage:	For short term use, store at 2-8°C up to 1 week. For long term storage, store at -20°C in small aliquots to prevent freeze-thaw cycles.
Stability:	Shelf life: one year from despatch.
Predicted Protein Size:	61 kDa
Gene Name:	phosphatase and actin regulator 3
Database Link:	Entrez Gene 116154 Human Q96KR7
Background:	This gene encodes a member of the phosphatase and actin regulator protein family. The encoded protein is associated with the nuclear scaffold in proliferating cells, and binds to actin and the catalytic subunit of protein phosphatase-1, suggesting that it functions as a regulatory subunit of protein phosphatase-1. Alternative splicing results in multiple transcript variants.
Synonyms:	C20orf101; H17739; MGC117178; OTTHUMP00000174467; SCAPIN1; SCAPININ



[View online »](#)

Product images:

Host: Rabbit
Target Name: PHAR3
Sample Tissue: 786-0 Cell Lysate
Antibody Dilution: 1.0 μ g/ml

WB Suggested Anti-PHAR3 antibody Titration: 1
ug/mL
Sample Type: Human 786-0 Whole Cell