

Product datasheet for **TA359278**

STAMBPL1 Rabbit Polyclonal Antibody

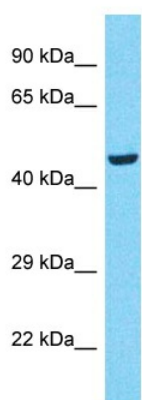
Product data:

Product Type:	Primary Antibodies
Applications:	WB
Reactivity:	Human
Host:	Rabbit
Clonality:	Polyclonal
Immunogen:	The immunogen is a synthetic peptide directed towards the C-terminal region of Human STAMBPL1
Specificity:	Expected reactivity: Guinea Pig, Horse, Human, Pig, Rabbit, Rat Homology: Guinea Pig: 79%; Horse: 93%; Human: 100%; Pig: 93%; Rabbit: 86%; Rat: 93%
Formulation:	Liquid. Purified antibody supplied in 1x PBS buffer with 0.09% (w/v) sodium azide and 2% sucrose. <i>Note that this product is shipped as lyophilized powder to China customers.</i>
Concentration:	lot specific
Purification:	Affinity Purified
Conjugation:	Unconjugated
Storage:	For short term use, store at 2-8°C up to 1 week. For long term storage, store at -20°C in small aliquots to prevent freeze-thaw cycles.
Stability:	Shelf life: one year from despatch.
Predicted Protein Size:	47kDa
Gene Name:	STAM binding protein like 1
Database Link:	Entrez Gene 57559 Human Q96FJ0
Background:	STAMBPL1 is a zinc metalloprotease that specifically cleaves 'Lys-63'- linked polyubiquitin chains. It does not cleave 'Lys-48'-linked polyubiquitin chains. .
Synonyms:	ALMalpha; AMSH-FP; AMSH-LP; AMSHLP; bA399O19.2; FLJ31524; KIAA1373; OTTHUMP00000020055



[View online »](#)

Product images:

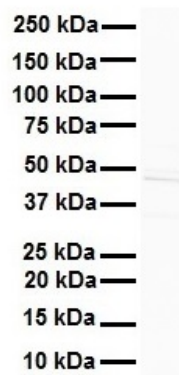


Host: Rabbit
 Target Name: STAMBPL1
 Sample Tissue: 786-0 Cell Lysate
 Antibody Dilution: 1.0µg/ml

Host: Rabbit
 Target Name: STAMBPL1
 Sample Tissue: Human 786-0 Whole Cell
 Antibody Dilution: 1 ug/ml



WB Suggested Anti-STAMBPL1 antibody Titration:
 1 ug/mL
 Sample Type: Human K562



WB Suggested Anti-STAMBPL1 antibody Titration:
1 ug/mL
Sample Type: Human MDA-MB-435s