

## Product datasheet for **TA359277**

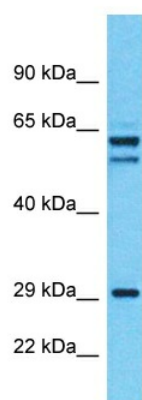
### ALS2CL Rabbit Polyclonal Antibody

#### Product data:

Product Type:	Primary Antibodies
Applications:	WB
Reactivity:	Human
Host:	Rabbit
Clonality:	Polyclonal
Immunogen:	The immunogen is a synthetic peptide directed towards the C-terminal region of human ALS2CL
Specificity:	<b>Expected reactivity:</b> Human
Formulation:	Liquid. Purified antibody supplied in 1x PBS buffer with 0.09% (w/v) sodium azide and 2% sucrose.
Concentration:	lot specific
Purification:	Affinity Purified
Conjugation:	Unconjugated
Storage:	For short term use, store at 2-8°C up to 1 week. For long term storage, store at -20°C in small aliquots to prevent freeze-thaw cycles.
Stability:	Shelf life: one year from despatch.
Predicted Protein Size:	58kDa
Gene Name:	ALS2 C-terminal like
Database Link:	<a href="#">NP_001177636.1</a> <a href="#">Entrez Gene 259173 Human</a> <a href="#">Q60I27</a>
Synonyms:	DKFZp686I0110; DKFZp686P238; FLJ36525; MGC129698; OTTHUMP00000209941; RN49018
Protein Families:	Druggable Genome



[View online »](#)

**Product images:**


Host: Rabbit  
 Target Name: ALS2CL  
 Sample Tissue: 293T Cell Lysate  
 Antibody Dilution: 1.0µg/ml

Host: Rabbit  
 Target Name: ALS2CL  
 Sample Type: 293T Whole Cell lysates  
 Antibody Dilution: 1.0ug/ml