

## Product datasheet for **TA359271**

### **KIF20B Rabbit Polyclonal Antibody**

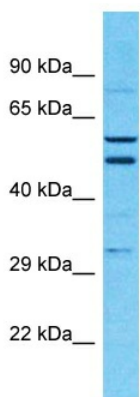
#### **Product data:**

Product Type:	Primary Antibodies
Applications:	WB
Reactivity:	Human
Host:	Rabbit
Clonality:	Polyclonal
Immunogen:	The immunogen is a synthetic peptide directed towards the C-terminal region of Human KIF20B
Specificity:	<b>Expected reactivity:</b> Human
Formulation:	Liquid. Purified antibody supplied in 1x PBS buffer with 0.09% (w/v) sodium azide and 2% sucrose.
Concentration:	lot specific
Purification:	Affinity Purified
Conjugation:	Unconjugated
Storage:	For short term use, store at 2-8°C up to 1 week. For long term storage, store at -20°C in small aliquots to prevent freeze-thaw cycles.
Stability:	Shelf life: one year from despatch.
Predicted Protein Size:	56kDa
Gene Name:	kinesin family member 20B
Database Link:	<a href="#">Entrez Gene 9585 Human Q96Q89-5</a>
Background:	KIF20B is a plus-end-directed motor enzyme that is required for completion of cytokinesis.
Synonyms:	CT90; DKFZp434B0435; DKFZp434P0810; KRMP1; MPHOSPH1; MPP-1; MPP1



[View online »](#)

**Product images:**



Host: Rabbit  
Target Name: KIF20B  
Sample Tissue: 721\_B Cell Lysate  
Antibody Dilution: 1.0µg/ml

Host: Rabbit  
Target Name: KIF20B  
Sample Type: 721\_B Whole Cell lysates  
Antibody Dilution: 1.0ug/ml