

## Product datasheet for **TA359266**

### **Bif (SH3GLB1) Rabbit Polyclonal Antibody**

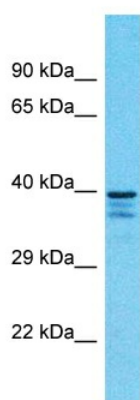
#### Product data:

|                         |                                                                                                                                                                                                                                                                                                                                                                                       |
|-------------------------|---------------------------------------------------------------------------------------------------------------------------------------------------------------------------------------------------------------------------------------------------------------------------------------------------------------------------------------------------------------------------------------|
| Product Type:           | Primary Antibodies                                                                                                                                                                                                                                                                                                                                                                    |
| Applications:           | WB                                                                                                                                                                                                                                                                                                                                                                                    |
| Reactivity:             | Human                                                                                                                                                                                                                                                                                                                                                                                 |
| Host:                   | Rabbit                                                                                                                                                                                                                                                                                                                                                                                |
| Clonality:              | Polyclonal                                                                                                                                                                                                                                                                                                                                                                            |
| Immunogen:              | The immunogen is a synthetic peptide directed towards the C-terminal region of Human SH3GLB1                                                                                                                                                                                                                                                                                          |
| Specificity:            | <b>Expected reactivity:</b> Human                                                                                                                                                                                                                                                                                                                                                     |
| Formulation:            | Liquid. Purified antibody supplied in 1x PBS buffer with 0.09% (w/v) sodium azide and 2% sucrose.<br><i>Note that this product is shipped as lyophilized powder to China customers.</i>                                                                                                                                                                                               |
| Concentration:          | lot specific                                                                                                                                                                                                                                                                                                                                                                          |
| Purification:           | Affinity Purified                                                                                                                                                                                                                                                                                                                                                                     |
| Conjugation:            | Unconjugated                                                                                                                                                                                                                                                                                                                                                                          |
| Storage:                | For short term use, store at 2-8°C up to 1 week. For long term storage, store at -20°C in small aliquots to prevent freeze-thaw cycles.                                                                                                                                                                                                                                               |
| Stability:              | Shelf life: one year from despatch.                                                                                                                                                                                                                                                                                                                                                   |
| Predicted Protein Size: | 40kDa                                                                                                                                                                                                                                                                                                                                                                                 |
| Gene Name:              | SH3 domain containing GRB2 like endophilin B1                                                                                                                                                                                                                                                                                                                                         |
| Database Link:          | <a href="#">NP_057093</a><br><a href="#">Entrez Gene 51100 Human Q9Y371</a>                                                                                                                                                                                                                                                                                                           |
| Background:             | This gene encodes a SRC homology 3 domain-containing protein. The encoded protein interacts with the proapoptotic member of the Bcl-2 family, Bcl-2-associated X protein (Bax) and may be involved in regulating apoptotic signaling pathways. This protein may also be involved in maintaining mitochondrial morphology. Alternate splicing results in multiple transcript variants. |
| Synonyms:               | Bif-1; CGI-61; dj612B15.2; KIAA0491                                                                                                                                                                                                                                                                                                                                                   |



[View online »](#)

## Product images:



Host: Rabbit  
Target Name: SH3GLB1  
Sample Tissue: U937 Cell Lysate  
Antibody Dilution: 1.0 $\mu$ g/ml

Host: Rabbit  
Target Name: SH3GLB1  
Sample Type: U937 Whole cell lysates  
Antibody Dilution: 1.0 $\mu$ g/ml