

Product datasheet for **TA359259**

Tropomodulin 2 (TMOD2) Rabbit Polyclonal Antibody

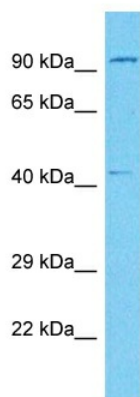
Product data:

Product Type:	Primary Antibodies
Applications:	WB
Reactivity:	Human
Host:	Rabbit
Clonality:	Polyclonal
Immunogen:	The immunogen is a synthetic peptide directed towards the N-terminal region of Human TMOD2
Specificity:	Expected reactivity: Cow, Dog, Guinea Pig, Horse, Human, Mouse, Rabbit, Rat Homology: Cow: 86%; Dog: 79%; Guinea Pig: 93%; Horse: 93%; Human: 100%; Mouse: 90%; Rabbit: 93%; Rat: 93%
Formulation:	Liquid. Purified antibody supplied in 1x PBS buffer with 0.09% (w/v) sodium azide and 2% sucrose.
Concentration:	lot specific
Purification:	Affinity Purified
Conjugation:	Unconjugated
Storage:	For short term use, store at 2-8°C up to 1 week. For long term storage, store at -20°C in small aliquots to prevent freeze-thaw cycles.
Stability:	Shelf life: one year from despatch.
Predicted Protein Size:	38kDa
Gene Name:	tropomodulin 2
Database Link:	Entrez Gene 29767 Human Q9NZR1
Background:	This gene encodes a neuronal-specific member of the tropomodulin family of actin-regulatory proteins. The encoded protein caps the pointed end of actin filaments preventing both elongation and depolymerization. The capping activity of this protein is dependent on its association with tropomyosin. Alternatively spliced transcript variants encoding different isoforms have been described.
Synonyms:	MGC39481; N-TMOD; NTMOD



[View online »](#)

Product images:



Host: Rabbit
Target Name: TMOD2
Sample Tissue: Hela Cell Lysate
Antibody Dilution: 1.0 μ g/ml

Host: Rabbit
Target Name: TMOD2
Sample Type: Hela Whole cell lysates
Antibody Dilution: 1.0 μ g/ml