

Product datasheet for **TA359255**

MOCS1 Rabbit Polyclonal Antibody

Product data:

Product Type:	Primary Antibodies
Applications:	WB
Reactivity:	Human
Host:	Rabbit
Clonality:	Polyclonal
Immunogen:	The immunogen is a synthetic peptide directed towards the C-terminal region of Human MOCS1
Specificity:	Expected reactivity: Human Homology: Human: 100%
Formulation:	Liquid. Purified antibody supplied in 1x PBS buffer with 0.09% (w/v) sodium azide and 2% sucrose. <i>Note that this product is shipped as lyophilized powder to China customers.</i>
Concentration:	lot specific
Purification:	Affinity Purified
Conjugation:	Unconjugated
Storage:	For short term use, store at 2-8°C up to 1 week. For long term storage, store at -20°C in small aliquots to prevent freeze-thaw cycles.
Stability:	Shelf life: one year from despatch.
Predicted Protein Size:	68kDa
Gene Name:	molybdenum cofactor synthesis 1
Database Link:	XP_005249185 Entrez Gene 4337 Human Q9NZB8-2



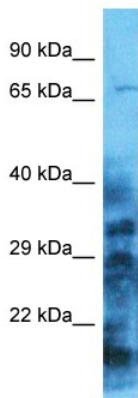
[View online »](#)

Background:

Molybdenum cofactor biosynthesis is a conserved pathway leading to the biological activation of molybdenum. The protein encoded by this gene is involved in this pathway. This gene was originally thought to produce a bicistronic mRNA with the potential to produce two proteins (MOCS1A and MOCS1B) from adjacent open reading frames. However, only the first open reading frame (MOCS1A) has been found to encode a protein from the putative bicistronic mRNA, whereas additional splice variants, whose full-length natures have yet to be determined, are likely to produce a fusion between the two open reading frames. This gene is defective in patients with molybdenum cofactor deficiency, type A. A related pseudogene has been identified on chromosome 16.

Synonyms:

KIAA0381; MIG11; MOCOD; MOCS1A; MOCS1B

Product images:


Host: Rabbit
 Target Name: MOCS1
 Sample Tissue: HT1080 Cell Lysate
 Antibody Dilution: 1.0µg/ml

Host: Rabbit
 Target Name: MOCS1
 Sample Type: HT1080 Whole Cell lysates
 Antibody Dilution: 1.0ug/ml