

Product datasheet for **TA359248**

SULT4A1 Rabbit Polyclonal Antibody

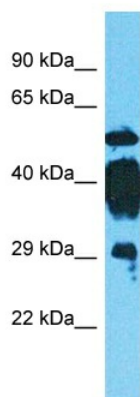
Product data:

Product Type:	Primary Antibodies
Applications:	WB
Reactivity:	Human
Host:	Rabbit
Clonality:	Polyclonal
Immunogen:	The immunogen is a synthetic peptide directed towards the middle region of Human SULT4A1
Specificity:	Expected reactivity: Cow, Dog, Guinea Pig, Human, Mouse, Pig, Rabbit, Rat, Zebrafish Homology: Cow: 100%; Dog: 100%; Guinea Pig: 93%; Human: 100%; Mouse: 100%; Pig: 100%; Rabbit: 100%; Rat: 100%; Zebrafish: 77%
Formulation:	Liquid. Purified antibody supplied in 1x PBS buffer with 0.09% (w/v) sodium azide and 2% sucrose. <i>Note that this product is shipped as lyophilized powder to China customers.</i>
Concentration:	lot specific
Purification:	Affinity Purified
Conjugation:	Unconjugated
Storage:	For short term use, store at 2-8°C up to 1 week. For long term storage, store at -20°C in small aliquots to prevent freeze-thaw cycles.
Stability:	Shelf life: one year from despatch.
Predicted Protein Size:	28kDa
Gene Name:	sulfotransferase family 4A member 1
Database Link:	XP_005261572 Entrez Gene 25830 Human Q9BR01-2
Background:	This gene encodes a member of the sulfotransferase family. The encoded protein is a brain-specific sulfotransferase believed to be involved in the metabolism of neurotransmitters. Polymorphisms in this gene may be associated with susceptibility to schizophrenia.
Synonyms:	BR-STL-1; BRSTL1; DJ388M5.3; hBR-STL; hBR-STL-1; MGC40032; NST; SULTX3



[View online »](#)

Product images:



Host: Rabbit
Target Name: SULT4A1
Sample Tissue: Jurkat Cell Lysate
Antibody Dilution: 1.0 μ g/ml

Host: Rabbit
Target Name: SULT4A1
Sample Tissue: Human Jurkat Whole Cell
Antibody Dilution: 1 μ g/ml