

Product datasheet for **TA359246**

SEN7 Rabbit Polyclonal Antibody

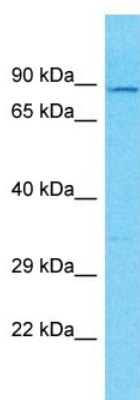
Product data:

Product Type:	Primary Antibodies
Applications:	WB
Reactivity:	Human
Host:	Rabbit
Clonality:	Polyclonal
Immunogen:	The immunogen is a synthetic peptide directed towards the N-terminal region of Human SEN7
Specificity:	Expected reactivity: Human, Rabbit Homology: Human: 100%; Rabbit: 79%
Formulation:	Liquid. Purified antibody supplied in 1x PBS buffer with 0.09% (w/v) sodium azide and 2% sucrose. <i>Note that this product is shipped as lyophilized powder to China customers.</i>
Concentration:	lot specific
Purification:	Affinity Purified
Conjugation:	Unconjugated
Storage:	For short term use, store at 2-8°C up to 1 week. For long term storage, store at -20°C in small aliquots to prevent freeze-thaw cycles.
Stability:	Shelf life: one year from despatch.
Predicted Protein Size:	97kDa
Gene Name:	SUMO1/sentrin specific peptidase 7
Database Link:	Entrez Gene 57337 Human Q9BQF6-4
Background:	The reversible posttranslational modification of proteins by the addition of small ubiquitin-like SUMO proteins is required for many cellular processes. SUMO-specific proteases, such as SEN7, process SUMO precursors to generate a C-terminal diglycine motif required for the conjugation reaction. They also display isopeptidase activity for deconjugation of SUMO-conjugated substrates.
Synonyms:	KIAA1707; MGC157730; SSP2; SUSP2



[View online »](#)

Product images:



Host: Rabbit
Target Name: SENP7
Sample Tissue: THP-1 Cell Lysate
Antibody Dilution: 1.0 μ g/ml

Host: Rabbit
Target Name: SENP7
Sample Tissue: Human THP-1 Whole Cell
Antibody Dilution: 1 μ g/ml