

## Product datasheet for **TA359245**

### SH3GL3 Rabbit Polyclonal Antibody

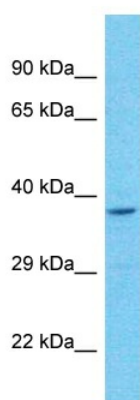
#### Product data:

|                         |   |
|-------------------------|---|
| Product Type:           | Primary Antibodies  |
| Applications:           | WB  |
| Reactivity:             | Human   |
| Host:                   | Rabbit  |
| Clonality:              | Polyclonal  |
| Immunogen:              | The immunogen is a synthetic peptide directed towards the C-terminal region of Human SH3GL3   |
| Specificity:            | <b>Expected reactivity:</b> Human   |
| Formulation:            | Liquid. Purified antibody supplied in 1x PBS buffer with 0.09% (w/v) sodium azide and 2% sucrose.<br><i>Note that this product is shipped as lyophilized powder to China customers.</i> |
| Concentration:          | lot specific  |
| Purification:           | Affinity Purified   |
| Conjugation:            | Unconjugated  |
| Storage:                | For short term use, store at 2-8°C up to 1 week. For long term storage, store at -20°C in small aliquots to prevent freeze-thaw cycles.   |
| Stability:              | Shelf life: one year from despatch.   |
| Predicted Protein Size: | 38kDa   |
| Gene Name:              | SH3 domain containing GRB2 like endophilin A3   |
| Database Link:          | <a href="#">NP_003018</a><br><a href="#">Entrez Gene 6457 Human Q99963</a>  |
| Background:             | SH3GL3 is implicated in endocytosis. It may recruit other proteins to membranes with high curvature.  |
| Synonyms:               | CNSA3; EEN-2B-L3; EEN-B2; Endophilin-3; HsT19371; SH3D2C; SH3P13  |



[View online »](#)

## Product images:



Host: Rabbit  
Target Name: SH3GL3  
Sample Tissue: Jurkat Cell Lysate  
Antibody Dilution: 1.0 $\mu$ g/ml

Host: Rabbit  
Target Name: SH3GL3  
Sample Type: Jurkat Whole Cell lysates  
Antibody Dilution: 1.0ug/ml