

Product datasheet for **TA359244**

TESC Rabbit Polyclonal Antibody

Product data:

Product Type:	Primary Antibodies
Applications:	WB
Reactivity:	Human
Host:	Rabbit
Clonality:	Polyclonal
Immunogen:	The immunogen is a synthetic peptide directed towards the N-terminal region of Human TESC
Specificity:	Expected reactivity: Human
Formulation:	Liquid. Purified antibody supplied in 1x PBS buffer with 0.09% (w/v) sodium azide and 2% sucrose. <i>Note that this product is shipped as lyophilized powder to China customers.</i>
Concentration:	lot specific
Purification:	Affinity Purified
Conjugation:	Unconjugated
Storage:	For short term use, store at 2-8°C up to 1 week. For long term storage, store at -20°C in small aliquots to prevent freeze-thaw cycles.
Stability:	Shelf life: one year from despatch.
Predicted Protein Size:	23kDa
Gene Name:	tescalcin
Database Link:	NP_060369 Entrez Gene 54997 Human Q96BS2



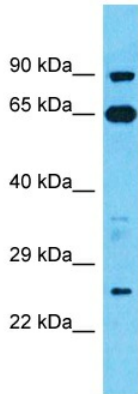
[View online »](#)

Background:

TESC functions as an integral cofactor in cell pH regulation by controlling plasma membrane-type Na(+)/H(+) exchange activity. It promotes the maturation, transport, cell surface stability and exchange activity of SLC9A1/NHE1 at the plasma membrane. It promotes the induction of hematopoietic stem cell differentiation toward megakaryocytic lineage. It is essential for the coupling of ERK cascade activation with the expression of ETS family genes in megakaryocytic differentiation. It is also involved in granulocytic differentiation in a ERK-dependent manner. It inhibits the phosphatase activity of calcineurin.

Synonyms:

CHP3; FLJ20607; OTTHUMP00000185561; tescalcin; TSC

Product images:

Host: Rabbit

Target Name: TESC

Sample Tissue: HT1080 Cell Lysate

Antibody Dilution: 1.0µg/ml

Host: Rabbit

Target Name: TESC

Sample Type: HT1080 Whole Cell lysates

Antibody Dilution: 1.0ug/ml