

Product datasheet for **TA359241**

SH3GL3 Rabbit Polyclonal Antibody

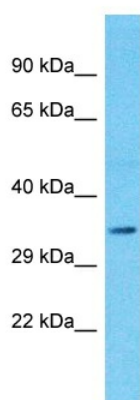
Product data:

Product Type:	Primary Antibodies
Applications:	WB
Reactivity:	Human
Host:	Rabbit
Clonality:	Polyclonal
Immunogen:	The immunogen is a synthetic peptide directed towards the middle region of Human SH3GL3
Specificity:	Expected reactivity: Human
Formulation:	Liquid. Purified antibody supplied in 1x PBS buffer with 0.09% (w/v) sodium azide and 2% sucrose.
Concentration:	lot specific
Purification:	Affinity Purified
Conjugation:	Unconjugated
Storage:	For short term use, store at 2-8°C up to 1 week. For long term storage, store at -20°C in small aliquots to prevent freeze-thaw cycles.
Stability:	Shelf life: one year from despatch.
Predicted Protein Size:	30kDa
Gene Name:	SH3 domain containing GRB2 like endophilin A3
Database Link:	Entrez Gene 6457 Human Q99963-2
Background:	SH3GL3 is implicated in endocytosis. It may recruit other proteins to membranes with high curvature.
Synonyms:	CNSA3; EEN-2B-L3; EEN-B2; Endophilin-3; HsT19371; SH3D2C; SH3P13



[View online »](#)

Product images:



Host: Rabbit
Target Name: SH3GL3
Sample Tissue: Jurkat Cell Lysate
Antibody Dilution: 1.0µg/ml

Host: Rabbit
Target Name: SH3GL3
Sample Type: Jurkat Whole Cell lysates
Antibody Dilution: 1.0ug/ml