

Product datasheet for **TA359232**

CDK10 Rabbit Polyclonal Antibody

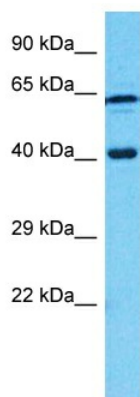
Product data:

Product Type:	Primary Antibodies
Applications:	WB
Reactivity:	Human
Host:	Rabbit
Clonality:	Polyclonal
Immunogen:	The immunogen is a synthetic peptide directed towards the C-terminal region of Human CDK10
Specificity:	Expected reactivity: Human
Formulation:	Liquid. Purified antibody supplied in 1x PBS buffer with 0.09% (w/v) sodium azide and 2% sucrose. <i>Note that this product is shipped as lyophilized powder to China customers.</i>
Concentration:	lot specific
Purification:	Affinity Purified
Conjugation:	Unconjugated
Storage:	For short term use, store at 2-8°C up to 1 week. For long term storage, store at -20°C in small aliquots to prevent freeze-thaw cycles.
Stability:	Shelf life: one year from despatch.
Predicted Protein Size:	39kDa
Gene Name:	cyclin-dependent kinase 10
Database Link:	Entrez Gene 8558 Human Q15131
Background:	The protein encoded by this gene belongs to the CDK subfamily of the Ser/Thr protein kinase family. The CDK subfamily members are highly similar to the gene products of <i>S. cerevisiae</i> cdc28, and <i>S. pombe</i> cdc2, and are known to be essential for cell cycle progression. This kinase has been shown to play a role in cellular proliferation and its function is limited to cell cycle G2-M phase. Multiple transcript variants encoding different isoforms have been found for this gene.
Synonyms:	PISSLRE



[View online »](#)

Product images:



Host: Rabbit
Target Name: CDK10
Sample Tissue: MCF7 Cell Lysate
Antibody Dilution: 1.0 μ g/ml

Host: Rabbit
Target Name: CDK10
Sample Type: MCF7 Whole cell lysates
Antibody Dilution: 1.0 μ g/ml