

Product datasheet for **TA359230**

TAF4B Rabbit Polyclonal Antibody

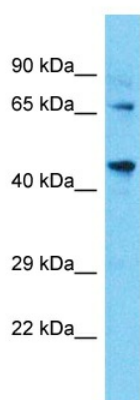
Product data:

Product Type:	Primary Antibodies
Applications:	WB
Reactivity:	Human
Host:	Rabbit
Clonality:	Polyclonal
Immunogen:	The immunogen is a synthetic peptide directed towards the N-terminal region of Human TAF4B
Specificity:	Expected reactivity: Cow, Dog, Horse, Human, Pig Homology: Cow: 79%; Dog: 92%; Horse: 92%; Human: 100%; Pig: 86%
Formulation:	Liquid. Purified antibody supplied in 1x PBS buffer with 0.09% (w/v) sodium azide and 2% sucrose. <i>Note that this product is shipped as lyophilized powder to China customers.</i>
Concentration:	lot specific
Purification:	Affinity Purified
Conjugation:	Unconjugated
Storage:	For short term use, store at 2-8°C up to 1 week. For long term storage, store at -20°C in small aliquots to prevent freeze-thaw cycles.
Stability:	Shelf life: one year from despatch.
Predicted Protein Size:	67kDa
Gene Name:	TATA-box binding protein associated factor 4b
Database Link:	XP_005258397 Entrez Gene 6875 Human Q92750-2
Background:	TATA binding protein (TBP) and TBP-associated factors (TAFs) participate in the formation of the TFIID protein complex, which is involved in initiation of transcription of genes by RNA polymerase II. This gene encodes a cell type-specific TAF that may be responsible for mediating transcription by a subset of activators in B cells.
Synonyms:	TAF2C2; TAFII-105; TAFII105



[View online »](#)

Product images:



Host: Rabbit
Target Name: TAF4B
Sample Tissue: COLO205 Cell Lysate
Antibody Dilution: 1.0 μ g/ml

Host: Rabbit
Target Name: TAF4B
Sample Type: COLO205 Whole Cell lysates
Antibody Dilution: 1.0 μ g/ml