

## Product datasheet for **TA359228**

### SAPK3 (MAPK12) Rabbit Polyclonal Antibody

#### Product data:

Product Type:	Primary Antibodies
Applications:	WB
Reactivity:	Human
Host:	Rabbit
Clonality:	Polyclonal
Immunogen:	The immunogen is a synthetic peptide directed towards the C-terminal region of Human MAPK12
Specificity:	<b>Expected reactivity:</b> Guinea Pig, Human, Mouse, Rabbit, Rat <b>Homology:</b> Guinea Pig: 86%; Human: 100%; Mouse: 86%; Rabbit: 86%; Rat: 86%
Formulation:	Liquid. Purified antibody supplied in 1x PBS buffer with 0.09% (w/v) sodium azide and 2% sucrose. <i>Note that this product is shipped as lyophilized powder to China customers.</i>
Concentration:	lot specific
Purification:	Affinity Purified
Conjugation:	Unconjugated
Storage:	For short term use, store at 2-8°C up to 1 week. For long term storage, store at -20°C in small aliquots to prevent freeze-thaw cycles.
Stability:	Shelf life: one year from despatch.
Predicted Protein Size:	40kDa
Gene Name:	mitogen-activated protein kinase 12
Database Link:	<a href="#">NP_002960</a> <a href="#">Entrez Gene 6300 Human P53778</a>
Background:	Activation of members of the mitogen-activated protein kinase family is a major mechanism for transduction of extracellular signals. Stress-activated protein kinases are one subclass of MAP kinases. The protein encoded by this gene functions as a signal transducer during differentiation of myoblasts to myotubes.
Synonyms:	ERK-6; ERK3; ERK5; ERK6; P38GAMMA; PRKM12; SAPK-3; SAPK3

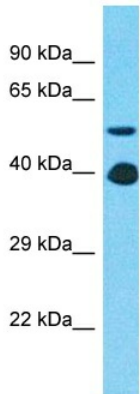


[View online »](#)

**Protein Families:** Druggable Genome, Protein Kinase

**Protein Pathways:** Amyotrophic lateral sclerosis (ALS), Epithelial cell signaling in Helicobacter pylori infection, Fc epsilon RI signaling pathway, GnRH signaling pathway, Leukocyte transendothelial migration, MAPK signaling pathway, Neurotrophin signaling pathway, NOD-like receptor signaling pathway, Oocyte meiosis, Progesterone-mediated oocyte maturation, RIG-I-like receptor signaling pathway, T cell receptor signaling pathway, Toll-like receptor signaling pathway, VEGF signaling pathway

### Product images:



Host: Rabbit  
Target Name: MAPK12  
Sample Tissue: Jurkat Cell Lysate  
Antibody Dilution: 1.0 $\mu$ g/ml

Host: Rabbit  
Target Name: MAPK12  
Sample Tissue: Human Jurkat Whole Cell  
Antibody Dilution: 1 $\mu$ g/ml