

## Product datasheet for **TA359227**

### **KDM5B Rabbit Polyclonal Antibody**

#### **Product data:**

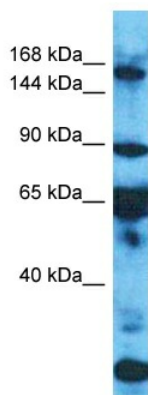
Product Type:	Primary Antibodies
Applications:	WB
Reactivity:	Human
Host:	Rabbit
Clonality:	Polyclonal
Immunogen:	The immunogen is a synthetic peptide directed towards the C-terminal region of Human KDM5B
Specificity:	<b>Expected reactivity:</b> Human
Formulation:	Liquid. Purified antibody supplied in 1x PBS buffer with 0.09% (w/v) sodium azide and 2% sucrose. <i>Note that this product is shipped as lyophilized powder to China customers.</i>
Concentration:	lot specific
Purification:	Affinity Purified
Conjugation:	Unconjugated
Storage:	For short term use, store at 2-8°C up to 1 week. For long term storage, store at -20°C in small aliquots to prevent freeze-thaw cycles.
Stability:	Shelf life: one year from despatch.
Predicted Protein Size:	169kDa
Gene Name:	lysine demethylase 5B
Database Link:	<a href="#">NP_006609</a> <a href="#">Entrez Gene 10765 Human</a> <a href="#">Q9UGL1</a>
Background:	KDM5B is a histone demethylase that demethylates 'Lys-4' of histone H3, thereby playing a central role in histone code. It does not demethylate histone H3 'Lys-9' or H3 'Lys-27'. KDM5B demethylates trimethylated, dimethylated and monomethylated H3 'Lys-4'. It acts as a transcriptional corepressor for FOXG1B and PAX9. It favors the proliferation of breast cancer cells by repressing tumor suppressor genes such as BRCA1 and HOXA5. In contrast, KDM5B may act as a tumor suppressor for melanoma.



[View online »](#)

**Synonyms:** CT31; FLJ10538; FLJ12459; FLJ12491; FLJ16281; FLJ23670; JARID1B; PLU-1; PLU1; PUT1; RBBP2H1; RBBP2H1A; RBP2-H1; RBP2-like

### Product images:



Host: Rabbit

Target Name: KDM5B

Sample Tissue: HepG2 Cell Lysate

Antibody Dilution: 1.0µg/ml

Host: Rabbit

Target Name: KDM5B

Sample Type: HepG2 Whole Cell lysates

Antibody Dilution: 1.0ug/ml