

## Product datasheet for **TA359223**

### PLCG 2 (PLCG2) Rabbit Polyclonal Antibody

#### Product data:

Product Type:	Primary Antibodies
Applications:	WB
Reactivity:	Human, Mouse
Host:	Rabbit
Clonality:	Polyclonal
Immunogen:	The immunogen is a synthetic peptide directed towards the middle region of Human PLCG2
Specificity:	<b>Expected reactivity:</b> Cow, Dog, Guinea Pig, Horse, Human, Mouse, Rabbit, Rat <b>Homology:</b> Cow: 100%; Dog: 100%; Guinea Pig: 100%; Horse: 92%; Human: 100%; Mouse: 100%; Rabbit: 92%; Rat: 100%
Formulation:	Liquid. Purified antibody supplied in 1x PBS buffer with 0.09% (w/v) sodium azide and 2% sucrose. <i>Note that this product is shipped as lyophilized powder to China customers.</i>
Concentration:	lot specific
Purification:	Affinity Purified
Conjugation:	Unconjugated
Storage:	For short term use, store at 2-8°C up to 1 week. For long term storage, store at -20°C in small aliquots to prevent freeze-thaw cycles.
Stability:	Shelf life: one year from despatch.
Predicted Protein Size:	139kDa
Gene Name:	phospholipase C gamma 2
Database Link:	<a href="#">NP_002652</a> <a href="#">Entrez Gene 234779 Mouse</a> <a href="#">Entrez Gene 5336 Human</a> <a href="#">P16885</a>
Background:	The protein encoded by this gene is a transmembrane signaling enzyme that catalyzes the conversion of 1-phosphatidyl-1D-myo-inositol 4,5-bisphosphate to 1D-myo-inositol 1,4,5-trisphosphate (IP3) and diacylglycerol (DAG), using calcium as a cofactor. IP3 and DAG are second messenger molecules important for transmitting signals from growth factor receptors and immune system receptors across the cell membrane.



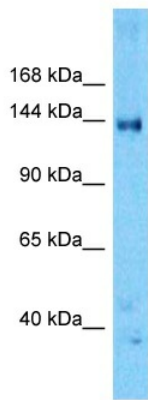
[View online »](#)

**Synonyms:** PLC-gamma-2; PLC-IV

**Protein Families:** Druggable Genome

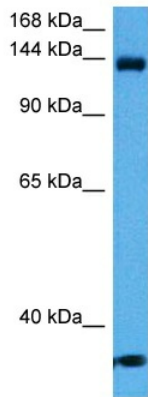
**Protein Pathways:** B cell receptor signaling pathway, Calcium signaling pathway, Epithelial cell signaling in Helicobacter pylori infection, ErbB signaling pathway, Fc epsilon RI signaling pathway, Fc gamma R-mediated phagocytosis, Glioma, Inositol phosphate metabolism, Leukocyte transendothelial migration, Metabolic pathways, Natural killer cell mediated cytotoxicity, Neurotrophin signaling pathway, Non-small cell lung cancer, Pathways in cancer, Phosphatidylinositol signaling system, VEGF signaling pathway, Vibrio cholerae infection

**Product images:**



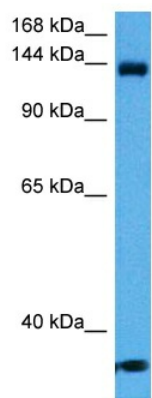
Host: Rabbit  
 Target Name: PLCG2  
 Sample Tissue: Fetal Liver Lysate  
 Antibody Dilution: 1.0µg/ml

Host: Rabbit  
 Target Name: PLCG2  
 Sample Tissue: Human Fetal Liver  
 Antibody Dilution: 1ug/ml



Host: Rabbit  
 Target Name: Plcg2  
 Sample Type: Mouse Liver Lysate  
 Antibody Dilution: 1.0µg/ml

Host: Rabbit  
 Target Name: PLCG2  
 Sample Tissue: Mouse Liver  
 Antibody Dilution: 1ug/ml



Host: Rabbit  
Target Name: Plcg2  
Sample Type: Mouse Liver Lysate  
Antibody Dilution: 1.0 $\mu$ g/ml

Host: Mouse  
Target Name: PLCG2  
Sample Tissue: Mouse Liver  
Antibody Dilution: 1 $\mu$ g/ml