

Product datasheet for **TA359217**

NUP88 Rabbit Polyclonal Antibody

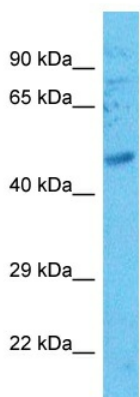
Product data:

Product Type:	Primary Antibodies
Applications:	WB
Reactivity:	Human
Host:	Rabbit
Clonality:	Polyclonal
Immunogen:	The immunogen is a synthetic peptide directed towards the middle region of Human NUP88
Specificity:	Expected reactivity: Human
Formulation:	Liquid. Purified antibody supplied in 1x PBS buffer with 0.09% (w/v) sodium azide and 2% sucrose.
Concentration:	lot specific
Purification:	Affinity Purified
Conjugation:	Unconjugated
Storage:	For short term use, store at 2-8°C up to 1 week. For long term storage, store at -20°C in small aliquots to prevent freeze-thaw cycles.
Stability:	Shelf life: one year from despatch.
Predicted Protein Size:	81kDa
Gene Name:	nucleoporin 88
Database Link:	NP_002523 Entrez Gene 4927 Human Q99567
Background:	The nuclear pore complex is a massive structure that extends across the nuclear envelope, forming a gateway that regulates the flow of macromolecules between the nucleus and the cytoplasm. Nucleoporins, a family of 50 to 100 proteins, are the main components of the nuclear pore complex in eukaryotic cells. The protein encoded by this gene belongs to the nucleoporin family and is associated with the oncogenic nucleoporin CAN/Nup214 in a dynamic subcomplex. This protein is also overexpressed in a large number of malignant neoplasms and precancerous dysplasias.
Synonyms:	karyoporin; MGC8530



[View online »](#)

Product images:



Host: Rabbit
Target Name: NUP88
Sample Tissue: Jurkat Cell Lysate
Antibody Dilution: 1.0 μ g/ml

Host: Rabbit
Target Name: NUP88
Sample Type: Jurkat Whole Cell lysates
Antibody Dilution: 1.0ug/ml