

Product datasheet for **TA359216**

Calcipressin 1 (RCAN1) Rabbit Polyclonal Antibody

Product data:

Product Type:	Primary Antibodies
Applications:	IHC, WB
Reactivity:	Human, Mouse
Host:	Rabbit
Clonality:	Polyclonal
Immunogen:	The immunogen is a synthetic peptide directed towards the C-terminal region of Human RCAN1
Specificity:	Expected reactivity: Human
Formulation:	Liquid. Purified antibody supplied in 1x PBS buffer with 0.09% (w/v) sodium azide and 2% sucrose. <i>Note that this product is shipped as lyophilized powder to China customers.</i>
Concentration:	lot specific
Purification:	Affinity Purified
Conjugation:	Unconjugated
Storage:	For short term use, store at 2-8°C up to 1 week. For long term storage, store at -20°C in small aliquots to prevent freeze-thaw cycles.
Stability:	Shelf life: one year from despatch.
Predicted Protein Size:	27kDa
Gene Name:	regulator of calcineurin 1
Database Link:	Entrez Gene 1827 Human P53805
Background:	The protein encoded by this gene interacts with calcineurin A and inhibits calcineurin-dependent signaling pathways, possibly affecting central nervous system development. This gene is located in the minimal candidate region for the Down syndrome phenotype, and is overexpressed in the brain of Down syndrome fetuses. Chronic overexpression of this gene may lead to neurofibrillary tangles such as those associated with Alzheimer disease. Alternative splicing results in multiple transcript variants.
Synonyms:	Adapt78; CSP1; DSC1; DSCR1; MCIP1; RCN1



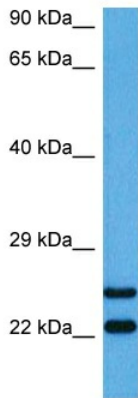
[View online »](#)

Product images:



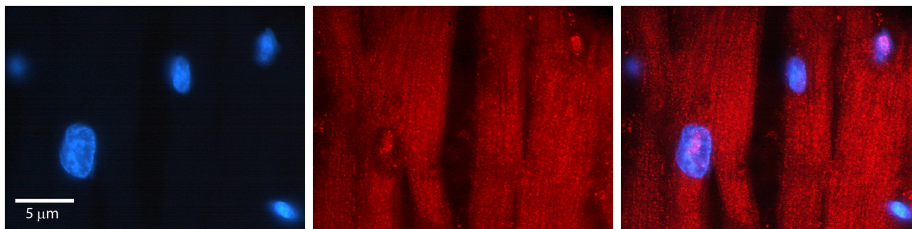
Host: Rabbit
 Target Name: RCAN1
 Sample Tissue: Fetal Kidney Lysate
 Antibody Dilution: 1.0µg/ml

Host: Rabbit
 Target Name: RCAN1
 Sample Type: Fetal Kidney lysates
 Antibody Dilution: 1.0ug/ml



Host: Rabbit
 Target Name: Rcan1
 Sample Type: Mouse Testis Lysate
 Antibody Dilution: 1.0µg/ml

Host: Mouse
 Target Name: RCAN1
 Sample Tissue: Mouse Testis
 Antibody Dilution: 1ug/ml



Rabbit Anti-RCAN1 Antibody
 Catalog Number: TA359216
 Formalin Fixed Paraffin Embedded Tissue:
 Human heart Tissue
 Observed Staining: Cytoplasmic, nucleus
 Primary Antibody Concentration: 1:100
 Other Working Concentrations: N/A
 Secondary Antibody: Donkey anti-Rabbit-Cy3
 Secondary Antibody Concentration: 1:200
 Magnification: 20X
 Exposure Time: 0.5–2.0 sec