

## Product datasheet for **TA359205**

### NFATC4 Rabbit Polyclonal Antibody

#### Product data:

Product Type:	Primary Antibodies
Applications:	WB
Reactivity:	Human
Host:	Rabbit
Clonality:	Polyclonal
Immunogen:	The immunogen is a synthetic peptide directed towards the N-terminal region of Human NFATC4
Specificity:	<b>Expected reactivity:</b> Human
Formulation:	Liquid. Purified antibody supplied in 1x PBS buffer with 0.09% (w/v) sodium azide and 2% sucrose. <i>Note that this product is shipped as lyophilized powder to China customers.</i>
Concentration:	lot specific
Purification:	Affinity Purified
Conjugation:	Unconjugated
Storage:	For short term use, store at 2-8°C up to 1 week. For long term storage, store at -20°C in small aliquots to prevent freeze-thaw cycles.
Stability:	Shelf life: one year from despatch.
Predicted Protein Size:	86kDa
Gene Name:	nuclear factor of activated T-cells 4
Database Link:	<a href="#">XP_005267762</a> <a href="#">Entrez Gene 4776 Human</a> <a href="#">Q14934-17</a>



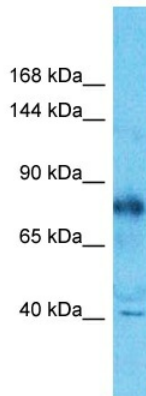
[View online »](#)

**Background:**

This gene encodes a member of the nuclear factor of activated T cells (NFAT) protein family. The encoded protein is part of a DNA-binding transcription complex. This complex consists of at least two components: a preexisting cytosolic component that translocates to the nucleus upon T cell receptor stimulation and an inducible nuclear component. NFAT proteins are activated by the calmodulin-dependent phosphatase, calcineurin. The encoded protein plays a role in the inducible expression of cytokine genes in T cells, especially in the induction of interleukin-2 and interleukin-4. Alternative splicing results in multiple transcript variants.

**Synonyms:**

NF-AT3; NF-ATc4; NFAT3

**Product images:**

Host: Rabbit  
Target Name: NFATC4  
Sample Tissue: RPMI-8226 Cell Lysate  
Antibody Dilution: 1.0µg/ml

Host: Rabbit  
Target Name: NFATC4  
Sample Type: RPMI-8226 Whole Cell lysates  
Antibody Dilution: 1.0ug/ml