

Product datasheet for **TA359195**

14-3-3 sigma (SFN) Rabbit Polyclonal Antibody

Product data:

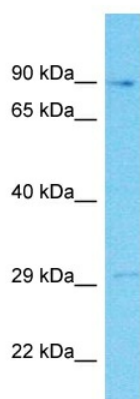
Product Type:	Primary Antibodies
Applications:	WB
Reactivity:	Human
Host:	Rabbit
Clonality:	Polyclonal
Immunogen:	The immunogen is a synthetic peptide directed towards the N-terminal region of Human SFN
Specificity:	Expected reactivity: Human
Formulation:	Liquid. Purified antibody supplied in 1x PBS buffer with 0.09% (w/v) sodium azide and 2% sucrose. <i>Note that this product is shipped as lyophilized powder to China customers.</i>
Concentration:	lot specific
Purification:	Affinity Purified
Conjugation:	Unconjugated
Storage:	For short term use, store at 2-8°C up to 1 week. For long term storage, store at -20°C in small aliquots to prevent freeze-thaw cycles.
Stability:	Shelf life: one year from despatch.
Predicted Protein Size:	27kDa
Gene Name:	stratifin
Database Link:	NP_006133 Entrez Gene 2810 Human P31947
Background:	SFN is a p53-regulated inhibitor of G2/M progression. It is an adapter protein implicated in the regulation of a large spectrum of both general and specialized signaling pathways. It binds to a large number of partners, usually by recognition of a phosphoserine or phosphothreonine motif. Binding generally results in the modulation of the activity of the binding partner. When bound to KRT17, regulates protein synthesis and epithelial cell growth by stimulating Akt/mTOR pathway. It may also regulate MDM2 autoubiquitination and degradation and thereby activate p53/TP53.



[View online »](#)

Synonyms: HME1; stratifin; YWHAS

Product images:



Host: Rabbit
Target Name: SFN
Sample Tissue: PANC1 Cell Lysate
Antibody Dilution: 1.0 μ g/ml

Host: Rabbit
Target Name: SFN
Sample Type: PANC1 Whole Cell lysates
Antibody Dilution: 1.0 μ g/ml