

## Product datasheet for TA359177

### C20orf103 (LAMP5) Rabbit Polyclonal Antibody

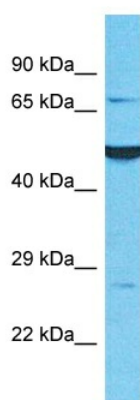
#### Product data:

Product Type:	Primary Antibodies
Applications:	WB
Reactivity:	Human
Host:	Rabbit
Clonality:	Polyclonal
Immunogen:	The immunogen is a synthetic peptide directed towards the C-terminal region of Human LAMP5
Specificity:	<b>Expected reactivity:</b> Human
Formulation:	Liquid. Purified antibody supplied in 1x PBS buffer with 0.09% (w/v) sodium azide and 2% sucrose. <i>Note that this product is shipped as lyophilized powder to China customers.</i>
Concentration:	lot specific
Purification:	Affinity Purified
Conjugation:	Unconjugated
Storage:	For short term use, store at 2-8°C up to 1 week. For long term storage, store at -20°C in small aliquots to prevent freeze-thaw cycles.
Stability:	Shelf life: one year from despatch.
Predicted Protein Size:	30kDa
Gene Name:	lysosomal associated membrane protein family member 5
Database Link:	<a href="#">NP_036393</a> <a href="#">Entrez Gene 24141 Human</a> <a href="#">Q9UJQ1</a>
Background:	The function of this protein remains unknown.
Synonyms:	3110035N03Rik; 6330527O06Rik; BAD-LAMP; LAMP-5; RGD1306991; RP23-7A19.2



[View online »](#)

## Product images:



Host: Rabbit  
Target Name: LAMP5  
Sample Tissue: HT1080 Cell Lysate  
Antibody Dilution: 1.0µg/ml

Host: Rabbit  
Target Name: LAMP5  
Sample Type: HT1080 Whole Cell lysates  
Antibody Dilution: 1.0ug/ml