

## Product datasheet for **TA359172**

### **EZH1 Rabbit Polyclonal Antibody**

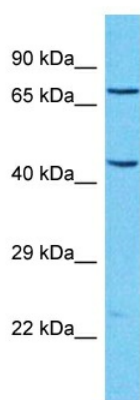
#### **Product data:**

Product Type:	Primary Antibodies
Applications:	WB
Reactivity:	Human
Host:	Rabbit
Clonality:	Polyclonal
Immunogen:	The immunogen is a synthetic peptide directed towards the C-terminal region of Human EZH1
Specificity:	<b>Expected reactivity:</b> Human
Formulation:	Liquid. Purified antibody supplied in 1x PBS buffer with 0.09% (w/v) sodium azide and 2% sucrose. <i>Note that this product is shipped as lyophilized powder to China customers.</i>
Concentration:	lot specific
Purification:	Affinity Purified
Conjugation:	Unconjugated
Storage:	For short term use, store at 2-8°C up to 1 week. For long term storage, store at -20°C in small aliquots to prevent freeze-thaw cycles.
Stability:	Shelf life: one year from despatch.
Predicted Protein Size:	74kDa
Gene Name:	enhancer of zeste 1 polycomb repressive complex 2 subunit
Database Link:	<a href="#">Entrez Gene 2145 Human Q92800-4</a>
Background:	EZH1 is a component of a noncanonical Polycomb repressive complex-2 (PRC2) that mediates methylation of histone H3 lys27 (H3K27) and functions in the maintenance of embryonic stem cell pluripotency and plasticity.
Synonyms:	ENX-2; KIAA0388



[View online »](#)

## Product images:



Host: Rabbit  
Target Name: EZH1  
Sample Tissue: 293T Cell Lysate  
Antibody Dilution: 1.0 $\mu$ g/ml

Host: Rabbit  
Target Name: EZH1  
Sample Type: 293T Whole Cell lysates  
Antibody Dilution: 1.0ug/ml