

## Product datasheet for **TA359166**

### ARF6 Rabbit Polyclonal Antibody

#### Product data:

Product Type:	Primary Antibodies
Applications:	IHC, WB
Reactivity:	Human
Host:	Rabbit
Clonality:	Polyclonal
Immunogen:	The immunogen is a synthetic peptide directed towards the C-terminal region of human ARF6
Specificity:	<b>Expected reactivity:</b> Human
Formulation:	Liquid. Purified antibody supplied in 1x PBS buffer with 0.09% (w/v) sodium azide and 2% sucrose. <i>Note that this product is shipped as lyophilized powder to China customers.</i>
Concentration:	lot specific
Purification:	Affinity Purified
Conjugation:	Unconjugated
Storage:	For short term use, store at 2-8°C up to 1 week. For long term storage, store at -20°C in small aliquots to prevent freeze-thaw cycles.
Stability:	Shelf life: one year from despatch.
Predicted Protein Size:	19kDa
Gene Name:	ADP ribosylation factor 6
Database Link:	<a href="#">NP_001654.1</a> <a href="#">Entrez Gene 382 Human</a> <a href="#">P62330</a>
Background:	This gene encodes a member of the human ARF gene family, which is part of the RAS superfamily. The ARF genes encode small guanine nucleotide-binding proteins that stimulate the ADP-ribosyltransferase activity of cholera toxin and play a role in vesicular trafficking and as activators of phospholipase D. The product of this gene is localized to the plasma membrane, and regulates vesicular trafficking, remodelling of membrane lipids, and signaling pathways that lead to actin remodeling. A pseudogene of this gene is located on chromosome 7.



[View online »](#)

**Synonyms:** DKFZp564M0264

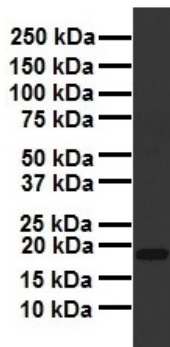
**Protein Pathways:** Endocytosis, Fc gamma R-mediated phagocytosis

**Product images:**

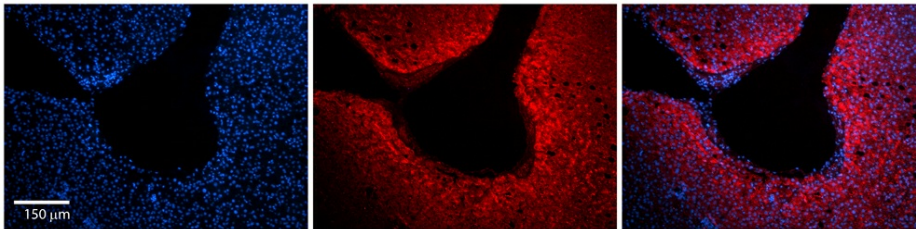


Host: Rabbit  
 Target Name: ARF6  
 Sample Tissue: MCF7 Cell Lysate  
 Antibody Dilution: 1.0µg/ml

Host: Rabbit  
 Target Name: ARF6  
 Sample Type: MCF7 Whole cell lysates  
 Antibody Dilution: 1.0ug/ml



WB Suggested Anti-ARF6 antibody Titration: 1 ug/mL  
 Sample Type: Human liver



Rabbit Anti-ARF6 Antibody  
 Catalog Number: TA359166  
 Formalin Fixed Paraffin Embedded Tissue:  
 Human Adult liver  
 Observed Staining: Cytoplasmic  
 Primary Antibody Concentration: 1:100  
 Secondary Antibody: Donkey anti-Rabbit-Cy2/3  
 Secondary Antibody Concentration: 1:200  
 Magnification: 20X  
 Exposure Time: 0.5–2.0 sec  
 Protocol located in Reviews and Data.