

Product datasheet for **TA359165**

Rab11b Rabbit Polyclonal Antibody

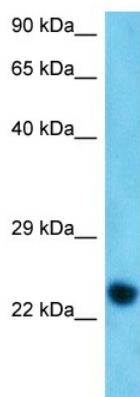
Product data:

Product Type:	Primary Antibodies
Applications:	WB
Reactivity:	Rat
Host:	Rabbit
Clonality:	Polyclonal
Immunogen:	The immunogen for Anti-Rab11b antibody is: synthetic peptide directed towards the C-terminal of Rat RB11B
Specificity:	Expected reactivity: Rat
Formulation:	Liquid. Purified antibody supplied in 1x PBS buffer with 0.09% (w/v) sodium azide and 2% sucrose. <i>Note that this product is shipped as lyophilized powder to China customers.</i>
Concentration:	lot specific
Purification:	Affinity purified
Conjugation:	Unconjugated
Storage:	For short term use, store at 2-8°C up to 1 week. For long term storage, store at -20°C in small aliquots to prevent freeze-thaw cycles.
Stability:	Shelf life: one year from despatch.
Predicted Protein Size:	23 kDa
Gene Name:	RAB11B, member RAS oncogene family
Database Link:	NP_116006.1 Entrez Gene 79434 Rat O35509
Background:	may be involved in osteoclast motility and membrane turnover [RGD, Feb 2006]
Synonyms:	H-YPT3; MGC133246; YPT3



[View online »](#)

Product images:



Host: Rabbit
Target Name: RB11B
Sample Tissue: Rat Kidney Lysate
Antibody Dilution: 2.0µg/ml

Host: Rabbit
Target Name: RB11B
Sample Type: Rat Kidney
Antibody Dilution: 1.0ug/ml