

Product datasheet for **TA359164**

NALP1 (NLRP1) Rabbit Polyclonal Antibody

Product data:

Product Type:	Primary Antibodies
Applications:	WB
Reactivity:	Human
Host:	Rabbit
Clonality:	Polyclonal
Immunogen:	The immunogen is a synthetic peptide directed towards the C terminal region of human NLRP1
Specificity:	Expected reactivity: Human
Formulation:	Liquid. Purified antibody supplied in 1x PBS buffer with 0.09% (w/v) sodium azide and 2% sucrose. <i>Note that this product is shipped as lyophilized powder to China customers.</i>
Concentration:	lot specific
Purification:	Affinity purified
Conjugation:	Unconjugated
Storage:	For short term use, store at 2-8°C up to 1 week. For long term storage, store at -20°C in small aliquots to prevent freeze-thaw cycles.
Stability:	Shelf life: one year from despatch.
Predicted Protein Size:	162 kDa
Gene Name:	NLR family, pyrin domain containing 1
Database Link:	NP_001028225 Entrez Gene 22861 Human Q9C000



[View online »](#)

Background:

This gene encodes a member of the Ced-4 family of apoptosis proteins. Ced-family members contain a caspase recruitment domain (CARD) and are known to be key mediators of programmed cell death. The encoded protein contains a distinct N-terminal pyrin-like motif, which is possibly involved in protein-protein interactions. This protein interacts strongly with caspase 2 and weakly with caspase 9. Overexpression of this gene was demonstrated to induce apoptosis in cells. Multiple alternatively spliced transcript variants encoding distinct isoforms have been found for this gene, but the biological validity of some variants has not been determined.

Synonyms:

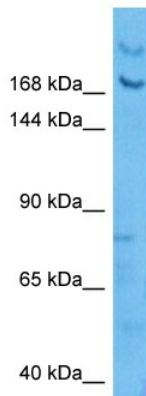
CARD7; CLR17.1; DEFCAP; DEFCAP-L/S; DKFZp586O1822; KIAA0926; NAC; NALP1; PP1044; SLEV1; VAMAS1

Protein Families:

Druggable Genome

Protein Pathways:

NOD-like receptor signaling pathway

Product images:


Host: Rabbit
 Target Name: NLRP1
 Sample Type: 786-0 Cell Lysate
 Antibody Dilution: 1.0µg/ml

Host: Rabbit
 Target Name: NLRP1
 Sample Tissue: Human 786-0 Whole Cell lysates
 Antibody Dilution: 2ug/ml