

Product datasheet for **TA359161**

SCNN1B Rabbit Polyclonal Antibody

Product data:

Product Type:	Primary Antibodies
Applications:	WB
Reactivity:	Human
Host:	Rabbit
Clonality:	Polyclonal
Immunogen:	The immunogen is a synthetic peptide directed towards the C-terminal region of human SCNN1B
Specificity:	Expected reactivity: Human
Formulation:	Liquid. Purified antibody supplied in 1x PBS buffer with 0.09% (w/v) sodium azide and 2% sucrose. <i>Note that this product is shipped as lyophilized powder to China customers.</i>
Concentration:	lot specific
Purification:	Affinity Purified
Conjugation:	Unconjugated
Storage:	For short term use, store at 2-8°C up to 1 week. For long term storage, store at -20°C in small aliquots to prevent freeze-thaw cycles.
Stability:	Shelf life: one year from despatch.
Predicted Protein Size:	66kDa
Gene Name:	sodium channel epithelial 1 beta subunit
Database Link:	NP_000327.2 Entrez Gene 6338 Human P51168
Background:	Nonvoltage-gated, amiloride-sensitive, sodium channels control fluid and electrolyte transport across epithelia in many organs. These channels are heteromeric complexes consisting of 3 subunits: alpha, beta, and gamma. This gene encodes the beta subunit, and mutations in this gene have been associated with pseudohypoaldosteronism type 1 (PHA1), and Liddle syndrome.
Synonyms:	BESC1; Beta-ENaC; Beta-NaCH; ENaCb; ENaCbeta; SCNEB

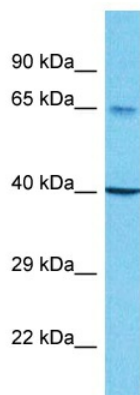


[View online >](#)

Protein Families: Druggable Genome, Ion Channels: Other, Transmembrane

Protein Pathways: Taste transduction

Product images:



Host: Rabbit
Target Name: SCNN1B
Sample Tissue: 721_B Cell Lysate
Antibody Dilution: 1.0 μ g/ml

Host: Rabbit
Target Name: SCNN1B
Sample Type: 721_B Whole Cell lysates
Antibody Dilution: 1.0 μ g/ml