

Product datasheet for **TA359154**

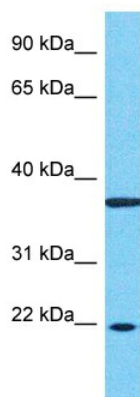
ZNF726 Rabbit Polyclonal Antibody

Product data:

Product Type:	Primary Antibodies
Applications:	WB
Reactivity:	Human
Host:	Rabbit
Clonality:	Polyclonal
Immunogen:	The immunogen is a synthetic peptide directed towards the N-terminal region of human ZNF726
Specificity:	Expected reactivity: Cow, Dog, Human, Rabbit Homology: Cow: 83%; Dog: 83%; Human: 100%; Rabbit: 90%
Formulation:	Liquid. Purified antibody supplied in 1x PBS buffer with 0.09% (w/v) sodium azide and 2% sucrose.
Concentration:	lot specific
Purification:	Affinity Purified
Conjugation:	Unconjugated
Storage:	For short term use, store at 2-8°C up to 1 week. For long term storage, store at -20°C in small aliquots to prevent freeze-thaw cycles.
Stability:	Shelf life: one year from despatch.
Predicted Protein Size:	21kDa
Gene Name:	zinc finger protein 726
Database Link:	NP_001230967.1 Entrez Gene 730087 Human A6NNF4
Synonyms:	ZNF726



[View online »](#)

Product images:


Host: Rabbit
 Target Name: ZNF726P1
 Sample Tissue: 721_B Cell Lysate
 Antibody Dilution: 1.0µg/ml

Host: Rabbit
 Target Name: ZNF726P1
 Sample Type: 721_B Whole Cell lysates
 Antibody Dilution: 1.0ug/ml