

Product datasheet for **TA359153**

ZNF197 Rabbit Polyclonal Antibody

Product data:

Product Type:	Primary Antibodies
Applications:	WB
Reactivity:	Human
Host:	Rabbit
Clonality:	Polyclonal
Immunogen:	The immunogen is a synthetic peptide directed towards the middle region of human ZNF197
Specificity:	Expected reactivity: Cow, Dog, Guinea Pig, Horse, Human, Mouse, Rabbit, Rat, Sheep Homology: Cow: 100%; Dog: 92%; Guinea Pig: 100%; Horse: 100%; Human: 100%; Mouse: 100%; Rabbit: 92%; Rat: 92%; Sheep: 92%
Formulation:	Liquid. Purified antibody supplied in 1x PBS buffer with 0.09% (w/v) sodium azide and 2% sucrose.
Concentration:	lot specific
Purification:	Affinity Purified
Conjugation:	Unconjugated
Storage:	For short term use, store at 2-8°C up to 1 week. For long term storage, store at -20°C in small aliquots to prevent freeze-thaw cycles.
Stability:	Shelf life: one year from despatch.
Predicted Protein Size:	33kDa
Gene Name:	zinc finger protein 197
Database Link:	NP_001020026.1 Entrez Gene 10168 Human O14709



[View online »](#)

Background:

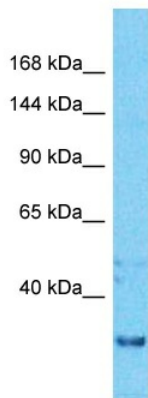
This gene product belongs to the zinc finger protein superfamily, members of which are regulatory proteins characterized by nucleic acid-binding zinc finger domains. The encoded protein contains 20 tandemly arrayed C2H2-type zinc fingers, a Kruppel-associated box (KRAB) domain, and a SCAN box. This transcript turns over rapidly and contains 3' UTR AUUUA motifs, which are often a hallmark of rapid turnover. It is overexpressed in some thyroid papillary carcinomas. This gene is located in a cluster of zinc finger genes at 3p21. Two alternatively spliced transcripts encoding different isoforms have been described.

Synonyms:

D3S1363E; OTTHUMP00000164119; P18; VHLaK; ZKSCAN9; ZNF20; ZNF166

Protein Families:

Druggable Genome, Transcription Factors

Product images:


Host: Rabbit
 Target Name: ZNF436
 Sample Tissue: ACHN Cell Lysate
 Antibody Dilution: 1.0µg/ml

Host: Rabbit
 Target Name: ZNF436
 Sample Type: ACHN Whole Cell lysates
 Antibody Dilution: 1.0ug/ml