

## Product datasheet for **TA359150**

### **PABPC1L Rabbit Polyclonal Antibody**

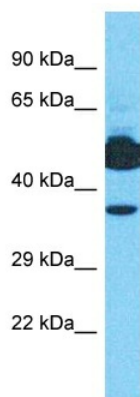
#### **Product data:**

Product Type:	Primary Antibodies
Applications:	WB
Reactivity:	Human
Host:	Rabbit
Clonality:	Polyclonal
Immunogen:	The immunogen is a synthetic peptide directed towards the C-terminal region of human PABPC1L
Specificity:	<b>Expected reactivity:</b> Cow, Dog, Guinea Pig, Horse, Human, Mouse, Rabbit, Rat, Yeast <b>Homology:</b> Cow: 100%; Dog: 93%; Guinea Pig: 100%; Horse: 100%; Human: 100%; Mouse: 100%; Rabbit: 100%; Rat: 100%; Yeast: 86%
Formulation:	Liquid. Purified antibody supplied in 1x PBS buffer with 0.09% (w/v) sodium azide and 2% sucrose. <i>Note that this product is shipped as lyophilized powder to China customers.</i>
Concentration:	lot specific
Purification:	Affinity Purified
Conjugation:	Unconjugated
Storage:	For short term use, store at 2-8°C up to 1 week. For long term storage, store at -20°C in small aliquots to prevent freeze-thaw cycles.
Stability:	Shelf life: one year from despatch.
Predicted Protein Size:	36kDa
Gene Name:	poly(A) binding protein cytoplasmic 1 like
Database Link:	<a href="#">NP_001118228.1</a> <a href="#">Entrez Gene 80336 Human</a> <a href="#">Q4VY17</a>
Synonyms:	C20orf119; dj1069P2.3; ePAB; FLJ11840; FLJ30809; FLJ42053; OTTHUMP00000063224; PABPC1L1



[View online »](#)

## Product images:



Host: Rabbit  
Target Name: PABPC1L  
Sample Tissue: Jurkat Cell Lysate  
Antibody Dilution: 1.0 $\mu$ g/ml

Host: Rabbit  
Target Name: PABPC1L  
Sample Tissue: Human Jurkat Whole Cell  
Antibody Dilution: 1 $\mu$ g/ml