

Product datasheet for **TA359149**

MAGEA9 (MAGEA9B) Rabbit Polyclonal Antibody

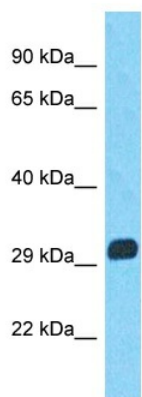
Product data:

Product Type:	Primary Antibodies
Applications:	WB
Reactivity:	Human
Host:	Rabbit
Clonality:	Polyclonal
Immunogen:	The immunogen is a synthetic peptide directed towards the N-terminal region of Human MAGEA9B
Specificity:	Expected reactivity: Human Homology: Human: 100%
Formulation:	Liquid. Purified antibody supplied in 1x PBS buffer with 0.09% (w/v) sodium azide and 2% sucrose. <i>Note that this product is shipped as lyophilized powder to China customers.</i>
Concentration:	lot specific
Purification:	Affinity Purified
Conjugation:	Unconjugated
Storage:	For short term use, store at 2-8°C up to 1 week. For long term storage, store at -20°C in small aliquots to prevent freeze-thaw cycles.
Stability:	Shelf life: one year from despatch.
Predicted Protein Size:	34kDa
Gene Name:	MAGE family member A9B
Database Link:	XP_005278251 Entrez Gene 728269 Human P43362
Background:	MAGEA9B is a duplication of the MAGEA9 gene on chromosome Xq28.
Synonyms:	MAGEA9



[View online »](#)

Product images:



Host: Rabbit
Target Name: MAGEA9B
Sample Tissue: COLO205 Cell Lysate
Antibody Dilution: 1.0µg/ml

Host: Rabbit
Target Name: MAGEA9B
Sample Type: COLO205 Whole Cell lysates
Antibody Dilution: 1.0ug/ml