

Product datasheet for TA359146

HSFX2 Rabbit Polyclonal Antibody

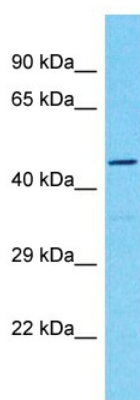
Product data:

Product Type:	Primary Antibodies
Applications:	WB
Reactivity:	Human
Host:	Rabbit
Clonality:	Polyclonal
Immunogen:	The immunogen is a synthetic peptide directed towards the C-terminal region of Human HSF2
Specificity:	Expected reactivity: Human Homology: Human: 100%
Formulation:	Liquid. Purified antibody supplied in 1x PBS buffer with 0.09% (w/v) sodium azide and 2% sucrose.
Concentration:	lot specific
Purification:	Affinity Purified
Conjugation:	Unconjugated
Storage:	For short term use, store at 2-8°C up to 1 week. For long term storage, store at -20°C in small aliquots to prevent freeze-thaw cycles.
Stability:	Shelf life: one year from despatch.
Predicted Protein Size:	46kDa
Gene Name:	heat shock transcription factor family, X-linked 2
Database Link:	NP_057237 Entrez Gene 100506164 Human Entrez Gene 100130086 Human Q9UBD0
Background:	The function of this protein remains unknown.
Synonyms:	HSFX1



[View online »](#)

Product images:



Host: Rabbit
Target Name: HSFX2
Sample Tissue: 293T Cell Lysate
Antibody Dilution: 1.0 μ g/ml

Host: Rabbit
Target Name: HSFX2
Sample Tissue: Human 293T Whole Cell
Antibody Dilution: 1 μ g/ml