

## Product datasheet for **TA359144**

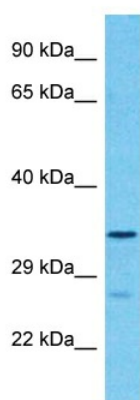
### **FAM189A1 Rabbit Polyclonal Antibody**

#### **Product data:**

Product Type:	Primary Antibodies
Applications:	WB
Reactivity:	Human
Host:	Rabbit
Clonality:	Polyclonal
Immunogen:	The immunogen is a synthetic peptide directed towards the middle region of Human FAM189A1
Specificity:	<b>Expected reactivity:</b> Human
Formulation:	Liquid. Purified antibody supplied in 1x PBS buffer with 0.09% (w/v) sodium azide and 2% sucrose.
Concentration:	lot specific
Purification:	Affinity Purified
Conjugation:	Unconjugated
Storage:	For short term use, store at 2-8°C up to 1 week. For long term storage, store at -20°C in small aliquots to prevent freeze-thaw cycles.
Stability:	Shelf life: one year from despatch.
Predicted Protein Size:	37kDa
Gene Name:	family with sequence similarity 189 member A1
Database Link:	<a href="#">Entrez Gene 23359 Human O60320-2</a>
Background:	The function of this protein remains unknown.
Synonyms:	TMEM228



[View online »](#)

**Product images:**

Host: Rabbit  
Target Name: FAM189A1  
Sample Tissue: 293T Cell Lysate  
Antibody Dilution: 1.0µg/ml

Host: Rabbit  
Target Name: FAM189A1  
Sample Type: 293T Whole Cell lysates  
Antibody Dilution: 1.0ug/ml