

## Product datasheet for **TA359143**

### **FAM22B (NUTM2B) Rabbit Polyclonal Antibody**

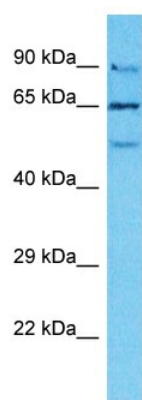
#### **Product data:**

Product Type:	Primary Antibodies
Applications:	WB
Reactivity:	Human
Host:	Rabbit
Clonality:	Polyclonal
Immunogen:	The immunogen is a synthetic peptide directed towards the middle region of Human NUTM2B
Specificity:	<b>Expected reactivity:</b> Human <b>Homology:</b> Human: 100%
Formulation:	Liquid. Purified antibody supplied in 1x PBS buffer with 0.09% (w/v) sodium azide and 2% sucrose.
Concentration:	lot specific
Purification:	Affinity Purified
Conjugation:	Unconjugated
Storage:	For short term use, store at 2-8°C up to 1 week. For long term storage, store at -20°C in small aliquots to prevent freeze-thaw cycles.
Stability:	Shelf life: one year from despatch.
Predicted Protein Size:	69kDa
Gene Name:	NUT family member 2B
Database Link:	<a href="#">XP_005270193</a> <a href="#">Entrez Gene 729262 Human</a> <a href="#">A6NNL0-2</a>
Background:	The function of this protein remains unknown.
Synonyms:	bA119F19.1; FAM22B



[View online »](#)

## Product images:



Host: Rabbit  
Target Name: NUTM2B  
Sample Tissue: PANC1 Cell Lysate  
Antibody Dilution: 1.0µg/ml

Host: Rabbit  
Target Name: NUTM2B  
Sample Tissue: Human PANC1 Whole Cell  
Antibody Dilution: 1ug/ml