

Product datasheet for **TA359142**

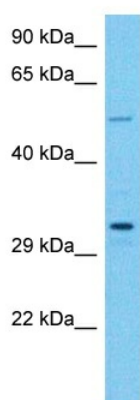
EVPLL Rabbit Polyclonal Antibody

Product data:

Product Type:	Primary Antibodies
Applications:	WB
Reactivity:	Human
Host:	Rabbit
Clonality:	Polyclonal
Immunogen:	The immunogen is a synthetic peptide directed towards the N-terminal region of Human EVPLL
Specificity:	Expected reactivity: Human
Formulation:	Liquid. Purified antibody supplied in 1x PBS buffer with 0.09% (w/v) sodium azide and 2% sucrose. <i>Note that this product is shipped as lyophilized powder to China customers.</i>
Concentration:	lot specific
Purification:	Affinity purified
Conjugation:	Unconjugated
Storage:	For short term use, store at 2-8°C up to 1 week. For long term storage, store at -20°C in small aliquots to prevent freeze-thaw cycles.
Stability:	Shelf life: one year from despatch.
Predicted Protein Size:	33 kDa
Gene Name:	envoplakin-like
Database Link:	NP_001138599.1 Entrez Gene 645027 Human A8MZ36
Background:	The function of this protein remains unknown.
Synonyms:	EVPLL



[View online »](#)

Product images:

Host: Rabbit
Target Name: EVPLL
Sample Tissue: HCT116 Cell Lysate
Antibody Dilution: 1.0 μ g/ml

WB Suggested Anti-EVPLL antibody Titration: 1
ug/mL
Sample Type: Human HCT116 Whole Cell