

Product datasheet for **TA359140**

EPOP Rabbit Polyclonal Antibody

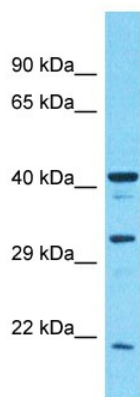
Product data:

Product Type:	Primary Antibodies
Applications:	WB
Reactivity:	Human
Host:	Rabbit
Clonality:	Polyclonal
Immunogen:	The immunogen is a synthetic peptide directed towards the C-terminal region of Human C17orf96
Specificity:	Expected reactivity: Cow, Dog, Horse, Human, Mouse, Rat Homology: Cow: 86%; Dog: 93%; Horse: 93%; Human: 100%; Mouse: 79%; Rat: 79%
Formulation:	Liquid. Purified antibody supplied in 1x PBS buffer with 0.09% (w/v) sodium azide and 2% sucrose.
Concentration:	lot specific
Purification:	Affinity Purified
Conjugation:	Unconjugated
Storage:	For short term use, store at 2-8°C up to 1 week. For long term storage, store at -20°C in small aliquots to prevent freeze-thaw cycles.
Stability:	Shelf life: one year from despatch.
Predicted Protein Size:	41kDa
Gene Name:	chromosome 17 open reading frame 96
Database Link:	NP_001124149 Entrez Gene 100170841 Human A6NHQ4
Synonyms:	C17orf96



[View online »](#)

Product images:



Host: Rabbit
Target Name: C17orf96
Sample Tissue: 293T Cell Lysate
Antibody Dilution: 1.0µg/ml

Host: Rabbit
Target Name: C17ORF96
Sample Tissue: Human 293T Whole Cell
Antibody Dilution: 1ug/ml