

## Product datasheet for **TA359134**

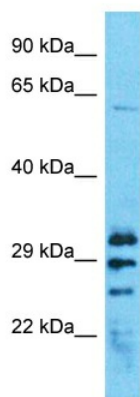
### ZBED2 Rabbit Polyclonal Antibody

#### Product data:

Product Type:	Primary Antibodies
Applications:	WB
Reactivity:	Human
Host:	Rabbit
Clonality:	Polyclonal
Immunogen:	The immunogen is a synthetic peptide directed towards the middle region of Human ZBED2
Specificity:	<b>Expected reactivity:</b> Cow, Dog, Horse, Human, Pig, Rabbit, Rat <b>Homology:</b> Cow: 100%; Dog: 79%; Horse: 93%; Human: 100%; Pig: 93%; Rabbit: 86%; Rat: 93%
Formulation:	Liquid. Purified antibody supplied in 1x PBS buffer with 0.09% (w/v) sodium azide and 2% sucrose.
Concentration:	lot specific
Purification:	Affinity Purified
Conjugation:	Unconjugated
Storage:	For short term use, store at 2-8°C up to 1 week. For long term storage, store at -20°C in small aliquots to prevent freeze-thaw cycles.
Stability:	Shelf life: one year from despatch.
Predicted Protein Size:	23kDa
Gene Name:	zinc finger BED-type containing 2
Database Link:	<a href="#">NP_078784</a> <a href="#">Entrez Gene 79413 Human</a> <a href="#">Q9BTP6</a>
Background:	The function of this protein remains unknown.
Synonyms:	MGC10796; OTTHUMP00000082693



[View online »](#)

**Product images:**


Host: Rabbit  
 Target Name: ZBED2  
 Sample Tissue: HepG2 Cell Lysate  
 Antibody Dilution: 1.0µg/ml

Host: Rabbit  
 Target Name: ZBED2  
 Sample Tissue: Human HepG2 Whole Cell  
 Antibody Dilution: 1ug/ml