

Product datasheet for TA359132

WWC3 Rabbit Polyclonal Antibody

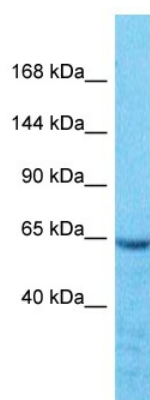
Product data:

Product Type:	Primary Antibodies
Applications:	WB
Reactivity:	Human
Host:	Rabbit
Clonality:	Polyclonal
Immunogen:	The immunogen is a synthetic peptide directed towards the N-terminal region of Human WWC3
Specificity:	Expected reactivity: Cow, Dog, Guinea Pig, Horse, Human, Rat Homology: Cow: 93%; Dog: 93%; Guinea Pig: 86%; Horse: 100%; Human: 100%; Rat: 86%
Formulation:	Liquid. Purified antibody supplied in 1x PBS buffer with 0.09% (w/v) sodium azide and 2% sucrose.
Concentration:	lot specific
Purification:	Affinity Purified
Conjugation:	Unconjugated
Storage:	For short term use, store at 2-8°C up to 1 week. For long term storage, store at -20°C in small aliquots to prevent freeze-thaw cycles.
Stability:	Shelf life: one year from despatch.
Predicted Protein Size:	64kDa
Gene Name:	WWC family member 3
Database Link:	Entrez Gene 55841 Human Q9ULE0-2
Background:	This gene encodes a member of the WWC family of proteins, which also includes the WWC1 (KIBRA) gene product and the WWC2 gene product. The protein encoded by this gene includes a C2 domain, which is known to mediate homodimerization in the related WWC1 gene product.
Synonyms:	BM042; KIAA1280



[View online »](#)

Product images:



Host: Rabbit
Target Name: WWC3
Sample Tissue: Jurkat Cell Lysate
Antibody Dilution: 1.0µg/ml

Host: Rabbit
Target Name: WWC3
Sample Type: Jurkat Whole Cell lysates
Antibody Dilution: 1.0ug/ml