

## Product datasheet for **TA359125**

### **TMPRSS11A Rabbit Polyclonal Antibody**

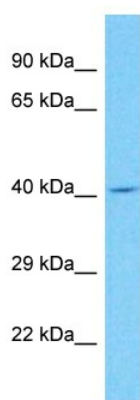
#### **Product data:**

Product Type:	Primary Antibodies
Applications:	WB
Reactivity:	Human
Host:	Rabbit
Clonality:	Polyclonal
Immunogen:	The immunogen is a synthetic peptide directed towards the C-terminal region of Human TMPRSS11A
Specificity:	<b>Expected reactivity:</b> Cow, Dog, Guinea Pig, Horse, Human, Mouse, Pig, Rabbit, Rat, Zebrafish <b>Homology:</b> Cow: 93%; Dog: 86%; Guinea Pig: 86%; Horse: 93%; Human: 100%; Mouse: 86%; Pig: 93%; Rabbit: 100%; Rat: 86%; Zebrafish: 92%
Formulation:	Liquid. Purified antibody supplied in 1x PBS buffer with 0.09% (w/v) sodium azide and 2% sucrose. <i>Note that this product is shipped as lyophilized powder to China customers.</i>
Concentration:	lot specific
Purification:	Affinity Purified
Conjugation:	Unconjugated
Storage:	For short term use, store at 2-8°C up to 1 week. For long term storage, store at -20°C in small aliquots to prevent freeze-thaw cycles.
Stability:	Shelf life: one year from despatch.
Predicted Protein Size:	45kDa
Gene Name:	transmembrane protease, serine 11A
Database Link:	<a href="#">Entrez Gene 339967 Human Q6ZMR5-2</a>
Background:	TMPRSS11A is a probable serine protease which may play a role in cellular senescence. Overexpression inhibits cell growth and induce G1 cell cycle arrest.
Synonyms:	ECRG1; HATL1; HESP; MGC133183



[View online »](#)

## Product images:



Host: Rabbit  
Target Name: TMPRSS11A  
Sample Tissue: HepG2 Cell Lysate  
Antibody Dilution: 1.0 $\mu$ g/ml

Host: Rabbit  
Target Name: TMPRSS11A  
Sample Tissue: Human HepG2 Whole Cell  
Antibody Dilution: 1 $\mu$ g/ml