

Product datasheet for **TA359124**

TMEM150C Rabbit Polyclonal Antibody

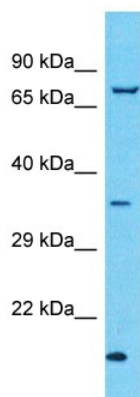
Product data:

Product Type:	Primary Antibodies
Applications:	WB
Reactivity:	Human
Host:	Rabbit
Clonality:	Polyclonal
Immunogen:	The immunogen is a synthetic peptide directed towards the C-terminal region of Human TMEM150C
Specificity:	Expected reactivity: Cow, Dog, Guinea Pig, Horse, Human, Mouse, Rabbit, Rat, Zebrafish Homology: Cow: 100%; Dog: 100%; Guinea Pig: 100%; Horse: 100%; Human: 100%; Mouse: 100%; Rabbit: 100%; Rat: 100%; Zebrafish: 77%
Formulation:	Liquid. Purified antibody supplied in 1x PBS buffer with 0.09% (w/v) sodium azide and 2% sucrose.
Concentration:	lot specific
Purification:	Affinity Purified
Conjugation:	Unconjugated
Storage:	For short term use, store at 2-8°C up to 1 week. For long term storage, store at -20°C in small aliquots to prevent freeze-thaw cycles.
Stability:	Shelf life: one year from despatch.
Predicted Protein Size:	19kDa
Gene Name:	transmembrane protein 150C
Database Link:	XP_005263073 Entrez Gene 441027 Human B9EJG8-2
Background:	The function of this protein remains unknown.
Synonyms:	RGD1306105



[View online »](#)

Product images:



Host: Rabbit
Target Name: TMEM150C
Sample Tissue: 293T Cell Lysate
Antibody Dilution: 1.0 μ g/ml

Host: Rabbit
Target Name: TMEM150C
Sample Tissue: Human 293T Whole Cell
Antibody Dilution: 1 μ g/ml