

## Product datasheet for **TA359118**

### ROGDI Rabbit Polyclonal Antibody

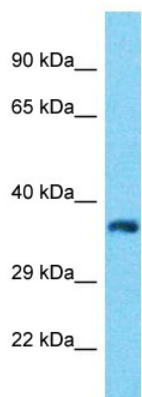
#### Product data:

|                         |   |
|-------------------------|---|
| Product Type:           | Primary Antibodies  |
| Applications:           | WB  |
| Reactivity:             | Human   |
| Host:                   | Rabbit  |
| Clonality:              | Polyclonal  |
| Immunogen:              | The immunogen is a synthetic peptide directed towards the N-terminal region of Human ROGDI  |
| Specificity:            | <b>Expected reactivity:</b> Cow, Dog, Guinea Pig, Human, Mouse, Rabbit, Rat<br><b>Homology:</b> Cow: 93%; Dog: 81%; Guinea Pig: 93%; Human: 100%; Mouse: 86%; Rabbit: 86%; Rat: 93%   |
| Formulation:            | Liquid. Purified antibody supplied in 1x PBS buffer with 0.09% (w/v) sodium azide and 2% sucrose.   |
| Concentration:          | lot specific  |
| Purification:           | Affinity Purified   |
| Conjugation:            | Unconjugated  |
| Storage:                | For short term use, store at 2-8°C up to 1 week. For long term storage, store at -20°C in small aliquots to prevent freeze-thaw cycles.   |
| Stability:              | Shelf life: one year from despatch.   |
| Predicted Protein Size: | 31kDa   |
| Gene Name:              | rogdi homolog   |
| Database Link:          | <a href="#">NP_078865</a><br><a href="#">Entrez Gene 79641 Human</a><br><a href="#">Q9GZN7</a>  |
| Background:             | This gene encodes a protein of unknown function. Loss-of-function mutation in this gene cause Kohlschutter-Tonz syndrome. Alternate splicing results in multiple transcript variants. |
| Synonyms:               | FLJ22386  |



[View online »](#)

Product images:



Host: Rabbit  
Target Name: ROGDI  
Sample Tissue: ACHN Cell Lysate  
Antibody Dilution: 1.0µg/ml

Host: Rabbit  
Target Name: ROGDI  
Sample Type: ACHN Whole Cell lysates  
Antibody Dilution: 1.0ug/ml