

## Product datasheet for **TA359116**

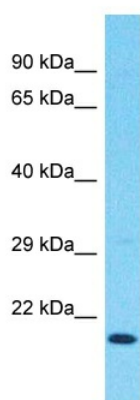
### REEP6 Rabbit Polyclonal Antibody

#### Product data:

Product Type:	Primary Antibodies
Applications:	WB
Reactivity:	Human
Host:	Rabbit
Clonality:	Polyclonal
Immunogen:	The immunogen is a synthetic peptide directed towards the C-terminal region of Human REEP6
Specificity:	<b>Expected reactivity:</b> Human <b>Homology:</b> Human: 100%
Formulation:	Liquid. Purified antibody supplied in 1x PBS buffer with 0.09% (w/v) sodium azide and 2% sucrose.
Concentration:	lot specific
Purification:	Affinity Purified
Conjugation:	Unconjugated
Storage:	For short term use, store at 2-8°C up to 1 week. For long term storage, store at -20°C in small aliquots to prevent freeze-thaw cycles.
Stability:	Shelf life: one year from despatch.
Predicted Protein Size:	20kDa
Gene Name:	receptor accessory protein 6
Database Link:	<a href="#">NP_612402</a> <a href="#">Entrez Gene 92840 Human</a> <a href="#">Q96HR9</a>
Background:	REEP6 may enhance the cell surface expression of odorant receptors.
Synonyms:	C19orf32; DP1L1; FLJ25383; TB2L1



[View online »](#)

**Product images:**

Host: Rabbit  
Target Name: REEP6  
Sample Tissue: THP-1 Cell Lysate  
Antibody Dilution: 1.0 $\mu$ g/ml

Host: Rabbit  
Target Name: REEP6  
Sample Type: THP-1 Whole Cell lysates  
Antibody Dilution: 1.0ug/ml