

Product datasheet for **TA359114**

GARNL1 (RALGAPA1) Rabbit Polyclonal Antibody

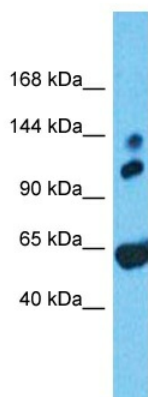
Product data:

Product Type:	Primary Antibodies
Applications:	WB
Reactivity:	Human
Host:	Rabbit
Clonality:	Polyclonal
Immunogen:	The immunogen is a synthetic peptide directed towards the N-terminal region of Human RALGAPA1
Specificity:	Expected reactivity: Human
Formulation:	Liquid. Purified antibody supplied in 1x PBS buffer with 0.09% (w/v) sodium azide and 2% sucrose. <i>Note that this product is shipped as lyophilized powder to China customers.</i>
Concentration:	lot specific
Purification:	Affinity Purified
Conjugation:	Unconjugated
Storage:	For short term use, store at 2-8°C up to 1 week. For long term storage, store at -20°C in small aliquots to prevent freeze-thaw cycles.
Stability:	Shelf life: one year from despatch.
Predicted Protein Size:	121kDa
Gene Name:	Ral GTPase activating protein catalytic alpha subunit 1
Database Link:	Entrez Gene 253959 Human Q6GYQ0-3
Background:	RALGAPA1 is a catalytic subunit of the heterodimeric RalGAP1 complex which acts as a GTPase activator for the Ras-like small GTPases RALA and RALB.
Synonyms:	GARNL1; GRIPE; TULIP1



[View online »](#)

Product images:



Host: Rabbit
Target Name: RALGAPA1
Sample Tissue: Fetal Heart Lysate
Antibody Dilution: 1.0 μ g/ml

Host: Rabbit
Target Name: RALGAPA1
Sample Type: Fetal Heart lysates
Antibody Dilution: 1.0ug/ml