

Product datasheet for **TA359113**

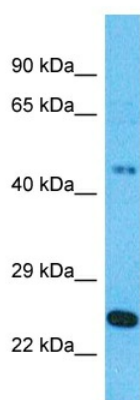
RAPGEFL1 Rabbit Polyclonal Antibody

Product data:

Product Type:	Primary Antibodies
Applications:	WB
Reactivity:	Human
Host:	Rabbit
Clonality:	Polyclonal
Immunogen:	The immunogen is a synthetic peptide directed towards the middle region of Human RAPGEFL1
Specificity:	Expected reactivity: Human
Formulation:	Liquid. Purified antibody supplied in 1x PBS buffer with 0.09% (w/v) sodium azide and 2% sucrose.
Concentration:	lot specific
Purification:	Affinity Purified
Conjugation:	Unconjugated
Storage:	For short term use, store at 2-8°C up to 1 week. For long term storage, store at -20°C in small aliquots to prevent freeze-thaw cycles.
Stability:	Shelf life: one year from despatch.
Predicted Protein Size:	50kDa
Gene Name:	Rap guanine nucleotide exchange factor like 1
Database Link:	NP_057423 Entrez Gene 51195 Human Q9UHV5-2
Background:	RAPGEFL1 is a probable guanine nucleotide exchange factor (GEF).
Synonyms:	Link-GEFII; MGC134798; MGC134799



[View online »](#)

Product images:


Host: Rabbit
 Target Name: RAPGEFL1
 Sample Tissue: 721_B Cell Lysate
 Antibody Dilution: 1.0µg/ml

Host: Rabbit
 Target Name: RAPGEFL1
 Sample Type: 721_B Whole Cell lysates
 Antibody Dilution: 1.0ug/ml