

Product datasheet for TA359112

PYROXD1 Rabbit Polyclonal Antibody

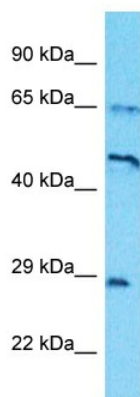
Product data:

Product Type:	Primary Antibodies
Applications:	WB
Reactivity:	Human
Host:	Rabbit
Clonality:	Polyclonal
Immunogen:	The immunogen is a synthetic peptide directed towards the middle region of Human PYROXD1
Specificity:	Expected reactivity: Guinea Pig, Human, Rat, Yeast Homology: Guinea Pig: 86%; Human: 100%; Rat: 79%; Yeast: 85%
Formulation:	Liquid. Purified antibody supplied in 1x PBS buffer with 0.09% (w/v) sodium azide and 2% sucrose.
Concentration:	lot specific
Purification:	Affinity Purified
Conjugation:	Unconjugated
Storage:	For short term use, store at 2-8°C up to 1 week. For long term storage, store at -20°C in small aliquots to prevent freeze-thaw cycles.
Stability:	Shelf life: one year from despatch.
Predicted Protein Size:	55kDa
Gene Name:	pyridine nucleotide-disulphide oxidoreductase domain 1
Database Link:	NP_079130 Entrez Gene 79912 Human Q8WU10
Background:	The function of this protein remains unknown.
Synonyms:	DKFZp762G094; FLJ22028
Protein Families:	Druggable Genome



[View online »](#)

Product images:



Host: Rabbit
Target Name: PYROXD1
Sample Tissue: HepG2 Cell Lysate
Antibody Dilution: 1.0 μ g/ml

Host: Rabbit
Target Name: PYROXD1
Sample Tissue: Human HepG2 Whole Cell
Antibody Dilution: 1 μ g/ml